

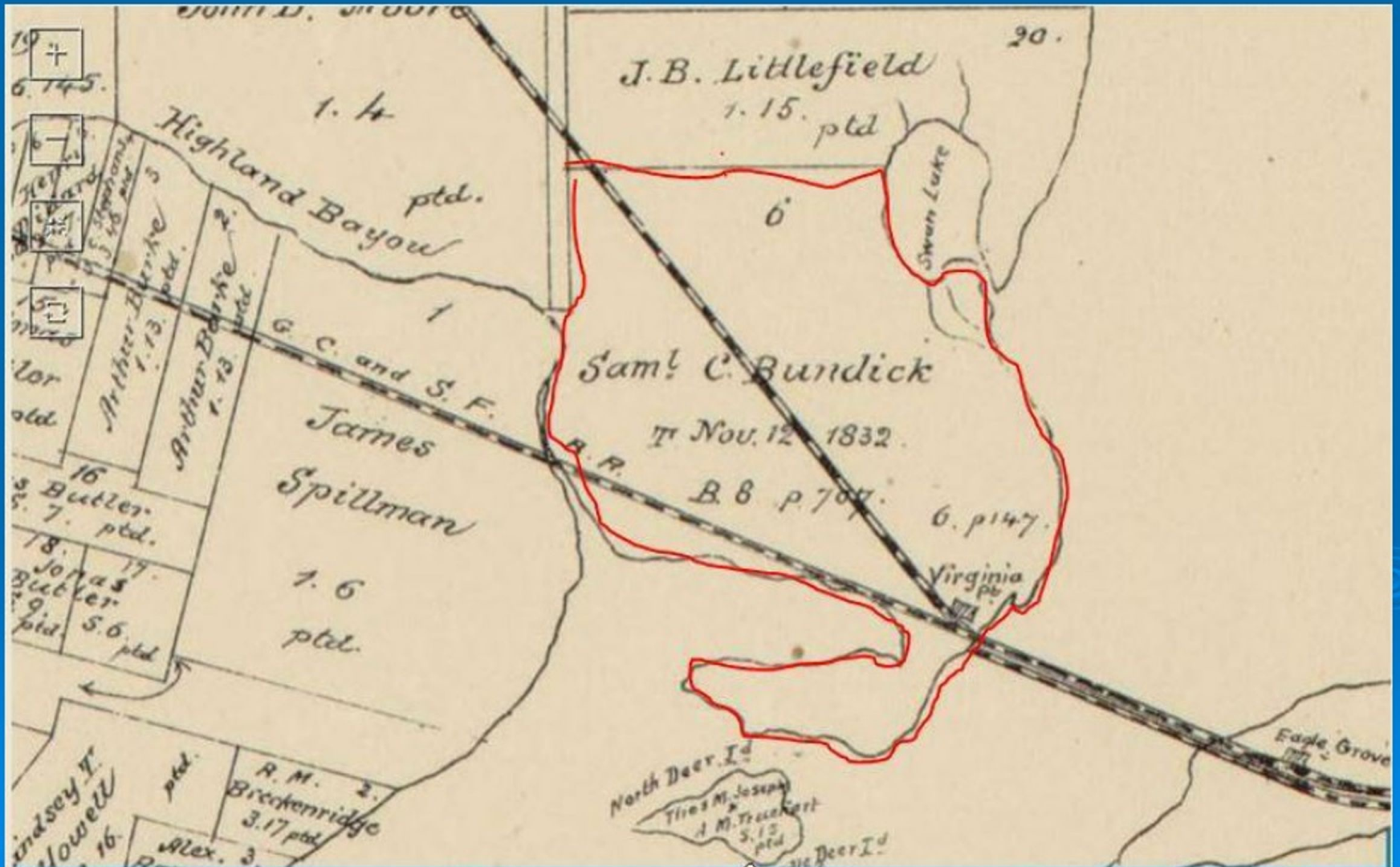


# ***History of Bayou Vista ...the First 150 Years***

**Ed Saconas**

# 1832 S.C. Bundick League

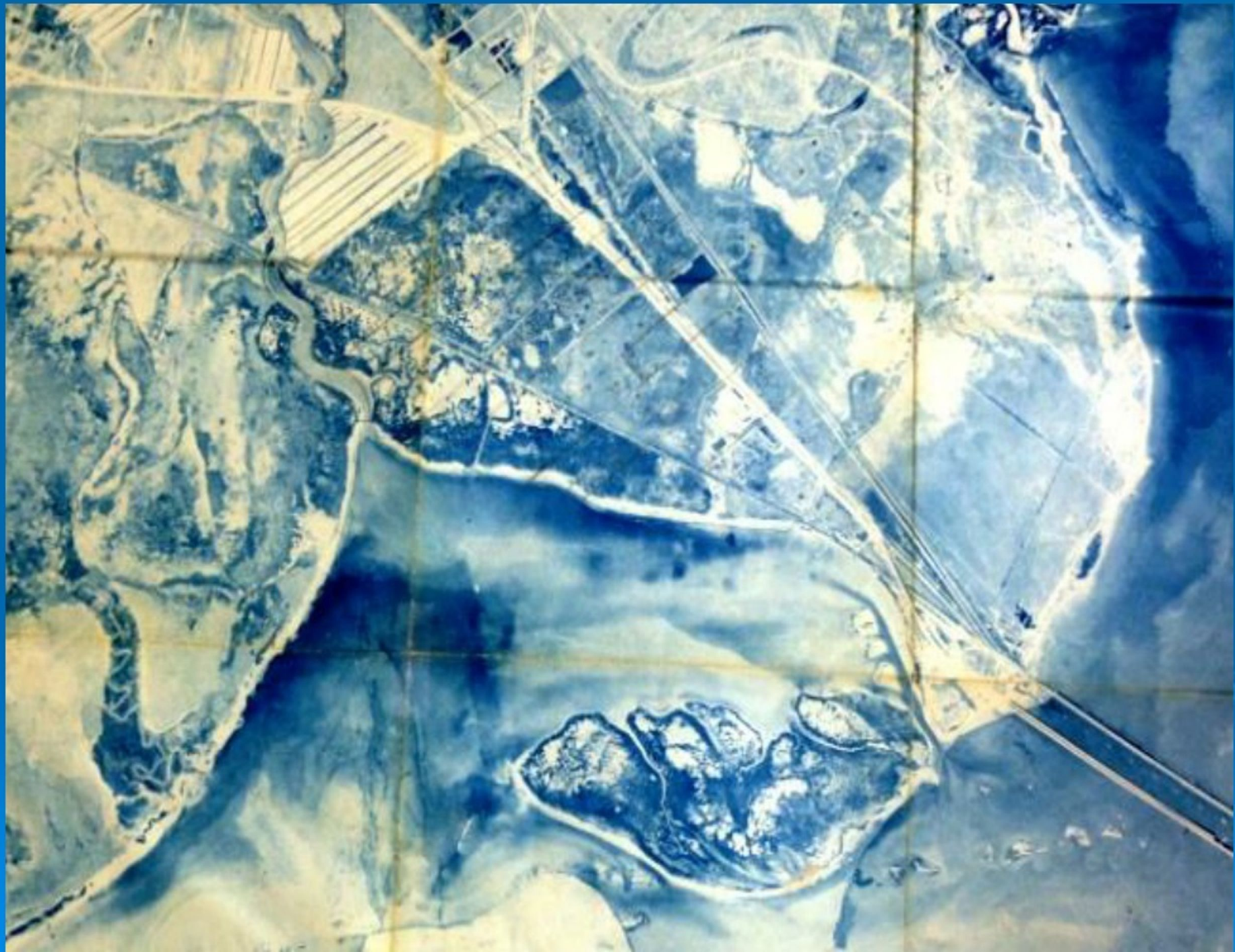
A League = 4,428.4 acres



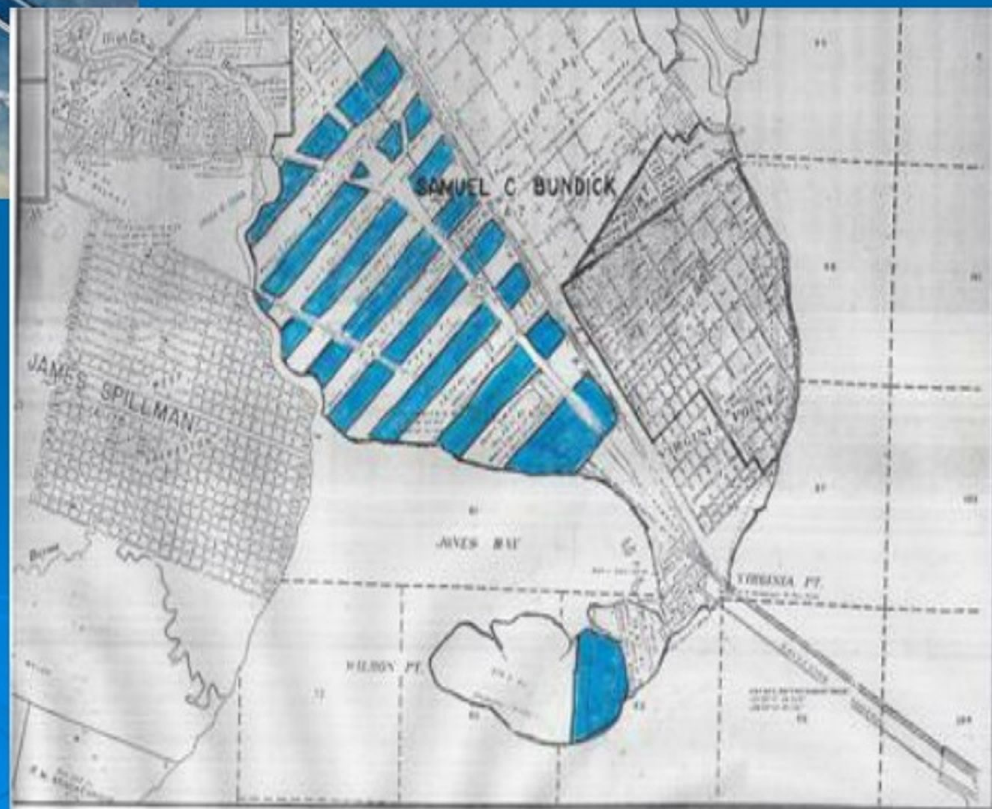












# George & Louise Saconas





**“Fish Camp” built over 60 years ago**



**#15**  
**Edgewater**

**Another “Fish Camp” sold for \$5500 in 1954**



**#14  
Edgewater**



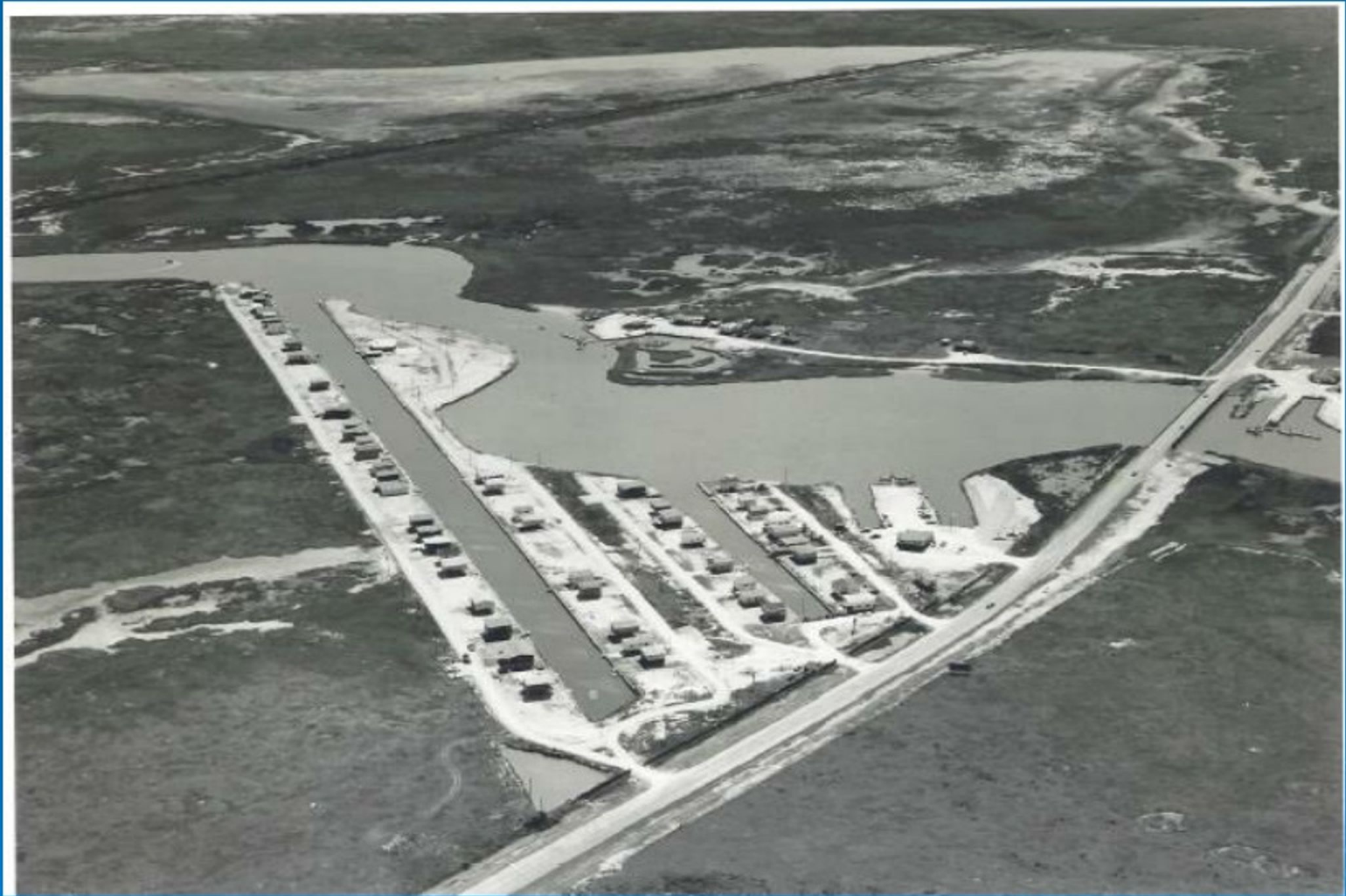
# Saconas' Home



**#1**  
**Highland**  
**Drive**

**House raised after Hurricane Carla**

**1958**



**“Original” Bayou Vista 123 lots**



1958



**View towards Jones Lake**

# 1960'S Bayou Vista Dr.





# Major Hurricane Risk 1900 thru 1961



## Sept. 8<sup>th</sup> 1900 “Great Galveston Hurricane”

Category 4 storm 145 miles per hour.

Leaving about 8,000 dead.  
It was the deadliest hurricane  
in US history.

**Near the Texas City Dike**

# 1900 “Great Galveston Hurricane”



The only remaining house near the beach for miles, Galveston



# Aug 7<sup>th</sup> 1915 Hurricane



Category 4  
hurricane made  
landfall southwest  
of Galveston.  
135 mph winds

**Destroyed causeway from arched bridge to  
mainland**

# 1915 Hurricane



**Wreckage of Inter urban tracks at Virginia Point**





# Sept 11<sup>th</sup> 1961 Hurricane "Carla"



Category 4  
145 mph winds

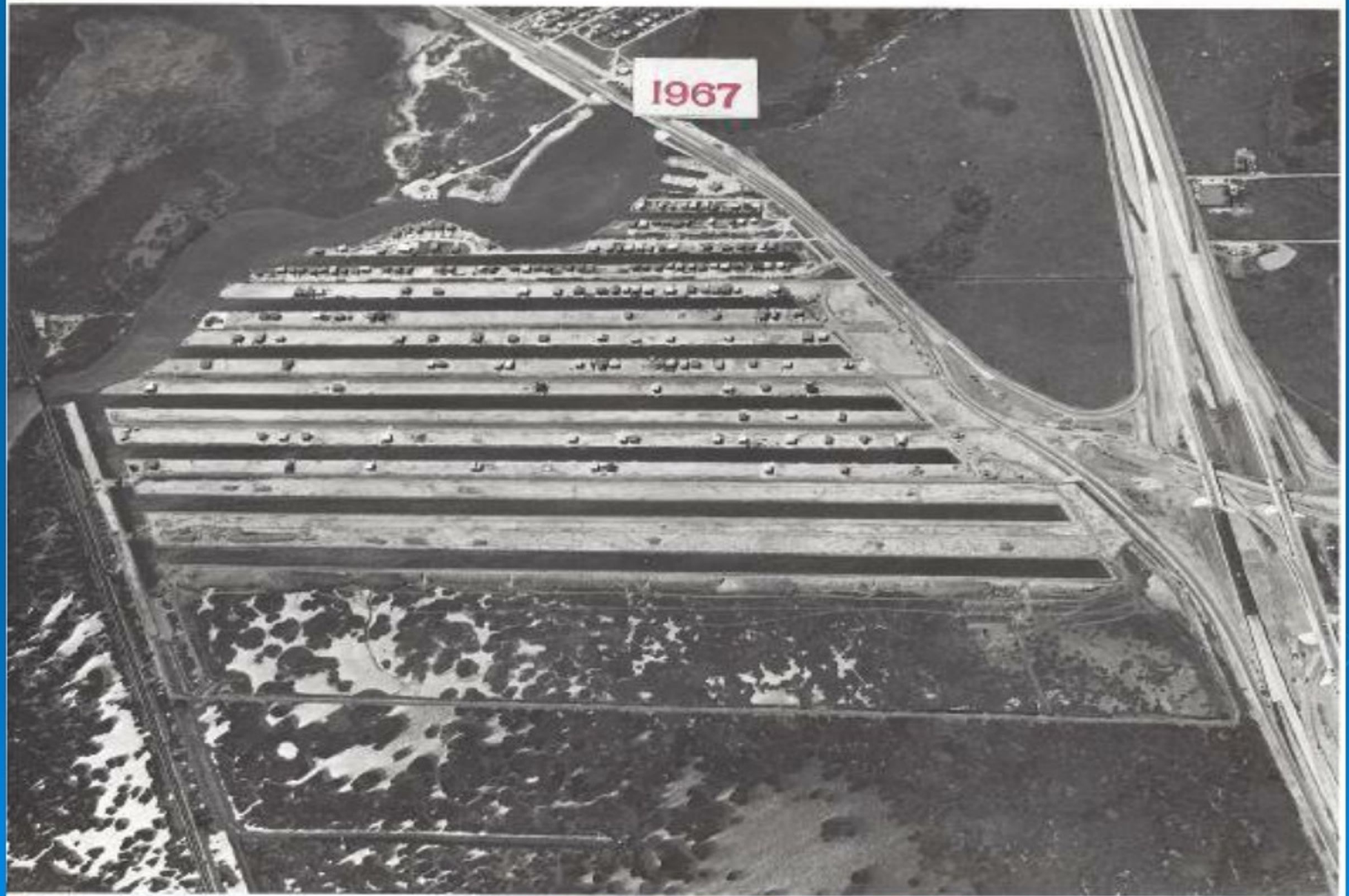
Galveston Texas



# ALL IN!!!!



# Canals under construction





JANUARY 1969

# NAHB JOURNAL OF Homebuilding

THE MAGAZINE FOR THE PROFESSIONAL BUILDER



Seeing What's Selling in Houston  
also  
NAHB Convention - Exposition at a Glance

# 1965 Amphi-Car





# BV Signs 1963 thru 1983 Sailfish Dr.



1965-1983

# BV Signs 1963





# 1960's New Bayou Vista



# New Bayou Vista Development

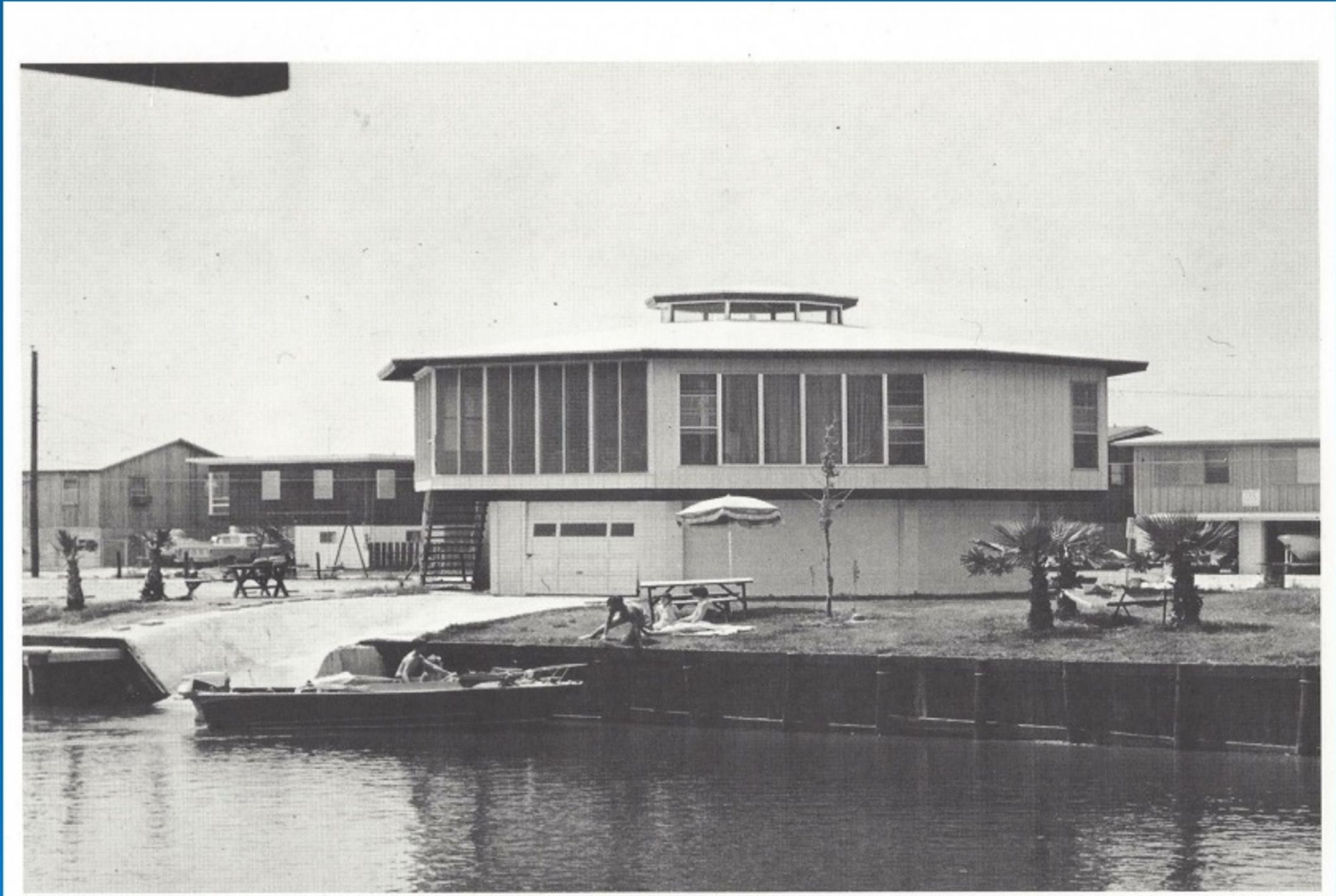




# Utilities development New Bayou Vista



# Saconas' New Texas Home

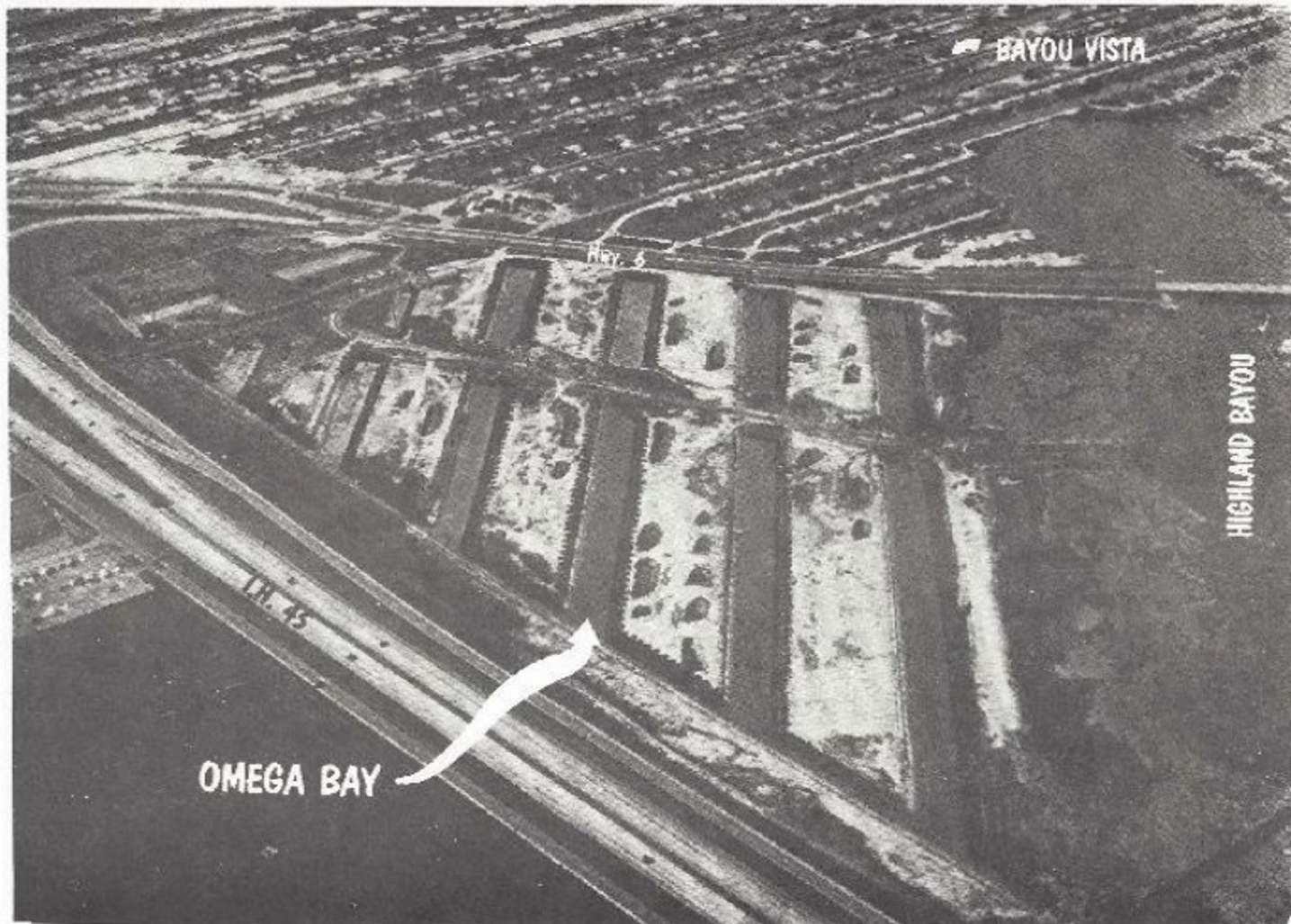


#1 Dolphin Drive built mid 1960's



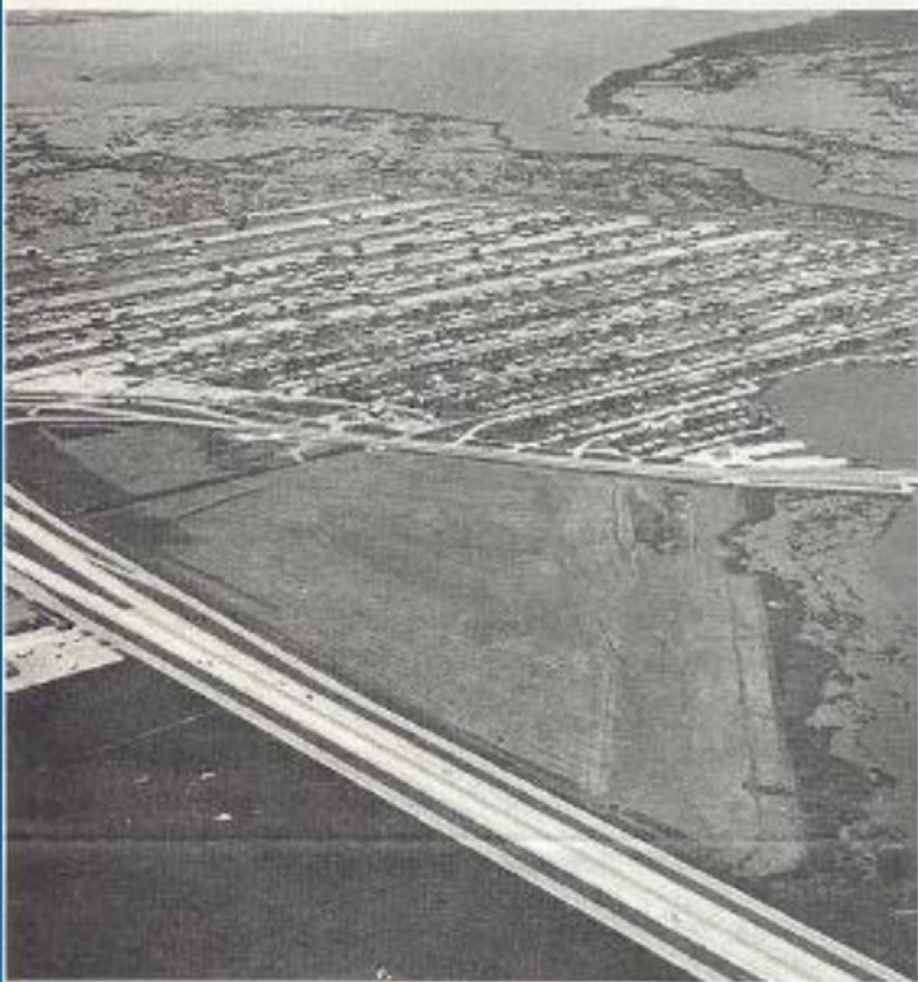
# OMEGA BAY

## Why not “Bayou Vista III”?





# 1976 OMEGA BAY



Aerial photos taken in August and December of 1975 show the tract and ground being prepared for Omega Bay. The new development is bordered by Interstate Highway 45 below and State Highway 6 above with Highland Bayou on the right. By December most of the channels had been dug and bulkheaded. A temporary road bisecting the channels will become the main access channel for Omega Bay with the circulation canal adjacent to Interstate 45.

## OMEGA BAY IS ON ITS WAY



# “OMEGA BAY” Dam Busting



# Sept 5<sup>th</sup> 1976 Dam Busting











# Bridge Raising Efforts

Highland Bayou flood drainage project—  
Help is on the way.

The Calvary gets lost.

**SURPRISE .....SURPRISE!!!!**

The background of the slide is a solid blue color. In the lower right quadrant, there are several faint, concentric white circles that resemble ripples on water, adding a decorative element to the slide.

# Hwy. 6 Bridges





# Railroad Bridge

VOLUME 1 NO. 3

December 1971



## ONE UP.....

The Texas Highway Department is well on it's way to completing the raising of it's bridge crossing State Highway 6, just north of Bayou Vista.

The bridge raising, which should be completed in the spring of 1972 will open considerable additional fishing and water ski areas to the boaters of Bayou Vista. The new bridge will have a vertical clearance of 13 feet above mean sea level, allowing the safe and easy passage of considerably larger boats.

The bridge raising represents the Texas Highway Department's portion of a Galveston County sponsored U.S. Army Corps of Engineers program to raise bridges across Highland Bayou and to dredge a deep water channel to the Intercoastal Canal. The current plans of the county are to combine the bridge raising program with the federally approved Highland Bayou Flood Control Project which will widen Highland Bayou and according to the Interim Survey Report on the project, give the bayou a minimum 10 foot water depth and a 300 foot width in the Bayou Vista area.

Raising the highway bridge is a giant step forward in the long awaited dream of nearly all Bayou Vistans to more fully enjoy one of the most ideal recreational waterways on the Texas Gulf Coast.



## .....AND ONE TO GO

On November 2, 1971, the voters of Galveston County approved by a more than 3 to 1 majority a bond issue to finance several federal projects which when completed will greatly enhance water enjoyment and property values in New Bayou Vista.

Of most interest to Bayou Vistans was the approval of issuing seven hundred thousand dollars in bonds as the County's portion of a project to raise two railroad bridges crossing Highland Bayou.

The Santa Fe Railroad bridge crossing Highland Bayou lies between Bayou Vista and the open water of West Bay. To date the bridge has limited the size of boats from Bayou Vista which could get into West Bay and the Gulf. The raising of the bridge will allow considerably larger boats to come into Bayou Vista, and thereby eliminate an obstacle which Bayou Vistans have lived with for years.

The bond issue also provided necessary funds for the Highland Bayou flood drainage project which will widen and deepen Highland Bayou. The first contract on the Highland Bayou flood drainage project is expected to be let in 1972.

The support of Bayou Vistans for the bond issue in the form of votes, contributions to the Bond Election Committee, and work in promoting the election was a decisive factor in the election victory.

# Raising of the AT&SF Railroad Bridge

