

PRSRT STD  
ECRWSS  
U.S. Postage  
Paid  
EDDM RETAIL

Wrightsville Borough  
PO Box 187  
Wrightsville, PA 17368

Postal Customer



# Wrightsville Borough Newsletter

## Welcome Spring!

### IMPORTANT NUMBERS

#### **BOROUGH ADMINISTRATION**

717-252-2768, ext. 012 or 013

#### **MUNICIPAL AUTHORITY**

717-252-2768. ext. 011

#### **HELLAM TOWNSHIP**

#### **POLICE DEPARTMENT**

44 Walnut Springs Road

York, PA 17406

717-252-3714

#### *NON-EMERGENCIES*

#### **911 EMERGENCIES**

#### **FIRE DEPARTMENT**

125 S. 2nd Street

717-252-4770-Station

#### *NON-EMERGENCIES*

#### **911 EMERGENCIES**

#### **STREET DEPARTMENT**

717-252-4559

#### **WATER DEPARTMENT**

717-252-3711

#### **SEWER DEPARTMENT**

717-252-3276

#### **TAX COLLECTOR**

717-887-5992

#### **ZONING DEPARTMENT**

Solanco Engineering Associates LLC

717-786-0355



DAYLIGHT  
SAVING  
TIME  
*Spring*  
FORWARD  
Sun, March 9,  
2025

### YARD WASTE PICK-UP

Yard waste pick-up will begin on Monday, March 3, 2025. Yard waste must be placed into brown biodegradable bags, or trash cans, fill with **ONLY** yard waste. Any yard waste that cannot be put into bags/cans may be bundled in no more than 4' length bundles and placed by the curb.

**Yard waste placed into plastic bags will NOT be picked up.**



**Wrightsville Borough Municipal Office will be closed on the following holidays:**

**Friday, April 18, 2025—Good Friday**

**Monday, May 26, 2025—Memorial Day**

# BOROUGH NEWS



## **STREET SWEEPING IS AROUND THE CORNER!**

Keep an eye out for **NO PARKING** signs on your street on the days of street sweeping. Residents are respectfully asked to refrain from sweeping gravel/stones into piles as it makes it more difficult to be picked up by the street sweeper.

## **TREES, GRASS AND WEEDS**

WB-IPM- Chapter 3, Section 302.4. All premises and exterior property shall be maintained free from excessive weed or plant growth. Weeds are defined as all grasses, annual plants and vegetation, other than trees or shrubs provided: however, this term shall not include cultivated flowers and gardens.



## **SOLID WASTE PICK UP**

Refuse containers are to be placed at the curb no earlier than the day before collections and must be removed by the end of the day of collection. Refuse containers must be leak-proof, insect/rodent-proof and equipped with tight-fitting lids.

## **REFUSE PICK-UP DAYS:**

**Tuesdays and Fridays**

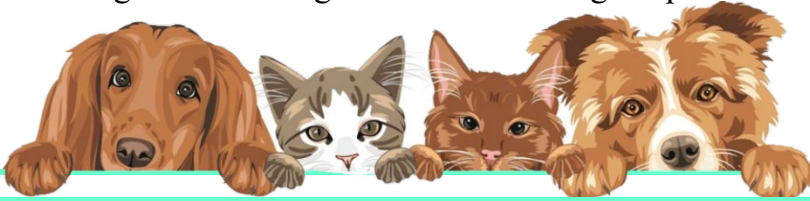
# BOROUGH NEWS

## **ATTENTION PET OWNERS**

Refusing to pick up after your dog is UNSANITARY, DISRESPECTFUL and ILLEGAL. Dog owners are required to pick up after their pets.

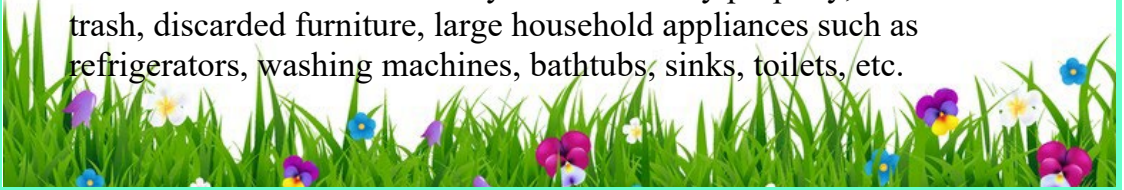
**~PLEASE BE SURE TO CLEAN UP AFTER YOUR PETS~**

In accordance with Chapter 6, Part 3, §307 of the Code of Ordinances, remember to always clean up after your dog to avoid creating an animal nuisance. Additionally, Chapter 2, Part 1, §102 states that allowing your cats/dogs to run at large within the Borough is prohibited.



## **WITH SPRING & SUMMER AROUND THE CORNER, PLEASE REMEMBER THAT IT IS A VIOLATION OF BOROUGH ORDINANCES TO:**

- Have grass growing over 6" inches or an accumulation of weeds
- Conduct open burning
- Have an accumulation of bulky rubbish on any property, such as excess trash, discarded furniture, large household appliances such as refrigerators, washing machines, bathtubs, sinks, toilets, etc.



## **REMINDER:**



*Just a  
Reminder!*

We have a DROP BOX at the Municipal Office. Our drop box can be used to drop off payments or paperwork for Borough/Municipal Authority staff during Business hours or after hours

# BOROUGH NEWS

## **PA ONE CALL SYSTEM**

Before planning any activity that involves digging, property owners must call PA ONE CALL at 811.

Visit [www.pa1call.org](http://www.pa1call.org) for more information.



**Know what's below.  
Call before you dig.**

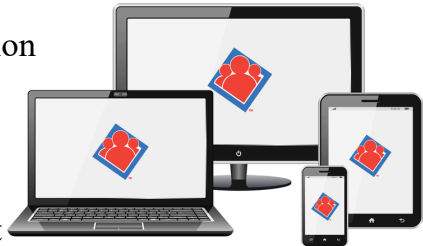
## **SAVVY CITIZEN**

**Want to know what's going on in Wrightsville Borough?**

Get real time updates of what's happening in your neighborhood by simply downloading our free app today! Not ready for the app? You can sign up for notifications via text and email instead.

Visit SavvyCitizenApp.com for more information

- Find out about local events
- Get important alerts and notices
- Get event reminders and change alerts
- Stay in sync with your local government
- 100% Free



## **2025 PENNSYLVANIA PRIMARY ELECTION INFORMATION**

**Tuesday, May 20, 2025**

- **The last day to REGISTER TO VOTE before the Primary Election is May 5, 2025.**
- **Polls are open on election day from 7 AM – 8 PM**
- **Last day to request a mail in or absentee ballot: May 13, 2025**

Visit the Website below for more information:

<https://www.pa.gov/agencies/vote/elections/upcoming-elections.html>



# HISTORIC WRIGHTSVILLE



**Historic Wrightsville, Inc. is dedicated to discovering Wrightsville's history, preserving that history and educating our community about what has been happening here that makes Wrightsville what it is today. To help with this we have an active membership and would like to encourage you to join us in our mission. Our Membership campaign runs January through April. Dues are \$20 for an individual membership, \$30 for a family and \$45 for a business. If you are interested in becoming a member or HWI, please contact museum at 717-252-1169 or visit us on Sunday from 1-4pm to see our new exhibit.**



# HISTORIC WRIGHTSVILLE

## 2025 Events & Fundraising Schedule

Month	Date	Event
January		NO EVENTS SCHEDULED – REDOING THE MUSEUM DISPLAYS
February	2/14, 15, 16, 17 2/20	Grand re-opening of the museum <b>Veggie Soup and Sub Sale</b>
March	3/28	Old Town Night – Lutheran Church
April	4/10 4/27	<b>Sub Sale</b> Memories & Munchies
May	5/1 & 5/2 5/17 5/26	<b>Give Local/Mission Possible</b> <b>Yard Sale – Lutheran Church</b> Memorial Day Parade
June	6/8 6/12 6/27,28,29	Memories & Munchies <b>Sub Sale</b> <b>Riverfest</b>
July	7/19	<b>Scavenger Hunt</b>
August	8/16	Memories & Munchies
September	9/27	<b>Paw Paw Festival</b>
October	10/16 10/17,18 10/24,25	<b>Chicken Corn Soup &amp; Sub Sale</b> <b>Ghost Tour – Back by popular demand</b> Ghost Tour Rain Date
November	11/9 11/21 11/30	Veterans Day Program Annual Banquet Tree Lighting
December	12/6	<b>Holiday Tea</b>



# HISTORIC WRIGHTSVILLE



## **OLD TOWN NIGHT**

**Friday March 28, 6:30PM**

**Wrightsville Lutheran Church**

**Mount Pisgah Cemetery, stories of the African  
American People and families of Wrightsville.**

**Presented by Rebecca Anstine and Duane Raber**



# 2025 HHW Comprehensive Plan, a Partnership for Growth

In 2023, Hellam Township and Hallam Borough joined with Wrightsville to develop a regional comprehensive plan to benefit all three municipalities. Developing and implementing this plan is critical to successfully winning state and county funding for many different types of improvements, all intended to help Wrightsville and surrounding areas to flourish into the future.

The comprehensive plan, meant to cover a 10-to-15-year period, is two years in the making so far. It began with the Project Team in early 2023. Wrightsville is represented by Eric J. White on the Project team. Eric has been instrumental from inception through implementation of several major grants awarded to

Wrightsville. Once the Project Team finished the initial phases in early 2024, the Steering Committee members joined the team. Wrightsville's representatives to the Steering Committee include my sister, Christine Siksa, who has 26 years of experience in planning and legislative matters, and me, a retired IBM Distinguished Engineer.

Throughout 2024, residents of Wrightsville were asked to participate in surveys, focus groups, and public meetings to provide input to the plan. In 2025, we can expect a series of events intended to give the community an opportunity to understand the value of the plan and get answers to follow-up questions.

In 2025, we expect our consultants, Michael Baker International, to present our 2025 comprehensive plan for Wrightsville, Hellam Township and Hallam Borough.

Now, you ask, what does such a plan look like? Not having seen the 2025 plan yet, I decided to look at Wrightsville's 2011 plan. This previous plan covers many topics, so I focused on one part as an example: "What is recommended to attract young families and professionals to settle in Wrightsville?"



# 2025 HHW Comprehensive Plan, a Partnership for Growth

Below are the 2011 Comprehensive Plan recommendations for Wrightsville focused on attracting young families and professionals, which will also benefit all Wrightsville residents and businesses.

**Enhance Walkability and Transportation:** Improve sidewalks, crosswalks, and pedestrian paths. Implement traffic calming techniques and enhance pedestrian and bicycle infrastructure. Advocate for improved public transportation options and create more park-and-ride facilities.

**Develop Mixed-Use Areas:** Encourage the development of mixed-use areas combining residential, commercial, and recreational spaces. Implement the Main Street Program to revitalize the downtown area and improve streetscapes.

**Increase Housing Options:** Provide a variety of housing options, including affordable apartments, modern living spaces, and multi-family housing.

Encourage adaptive reuse of existing buildings for residential purposes.

**Support Local Businesses and Startups:** Foster a supportive environment for local businesses and startups by offering incentives and creating coworking spaces.

Encourage the establishment of business incubators.

**Improve Recreational and Cultural Facilities:** Expand recreational opportunities such as hiking/walking trails, community centers, and sports facilities. Promote cultural activities and events to create a lively community atmosphere.

**Leverage Historic and Natural Resources:** Promote the Borough's historic character and heritage. Develop and market heritage tourism and eco-tourism opportunities. Utilize the Susquehanna River and surrounding natural areas for recreational activities.

**Invest in Technology and Infrastructure:** Ensure high-speed internet and modern infrastructure are available to support remote work and tech-savvy residents.

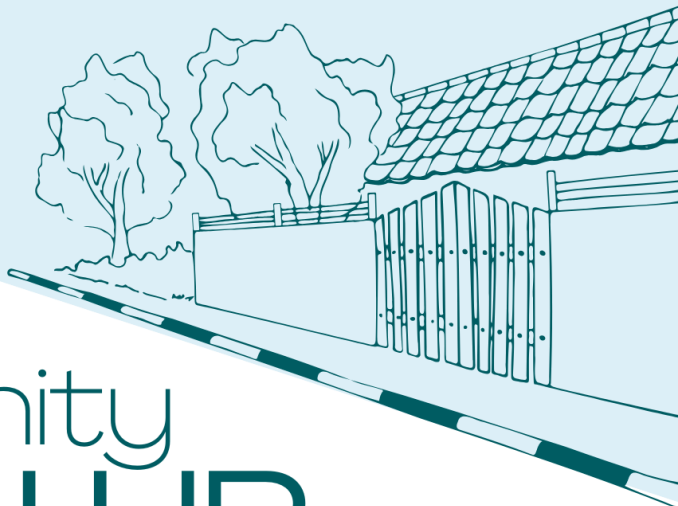
**Create Social and Networking Opportunities:** Organize community events, networking opportunities, and social activities to help young professionals connect and build a sense of community.

**Market the Borough's Unique Qualities:** Highlight Wrightsville's small-town charm, scenic beauty, and quality of life in marketing campaigns to attract young professionals looking for a balanced lifestyle.

I can safely say we expect to see similar recommendations – but updated for 2025 and beyond. The exciting new twist is the partnership we formed with Hellam Township and Hallam Borough.

Here's looking forward to a bright future for our area!





# THE BIG Community CLEAN UP

Join us to clean up the local area. Let's make our community a cleaner, greener space for everyone.

**LARGE ITEM  
DROP OFF**  
SATURDAY  
JUNE 14TH

3RD ST BALLFIELDS  
8AM-NOON

**CURBSIDE PICK UP**  
FRIDAY JUNE 13TH

CALL LORRI BY  
WEDNESDAY JUNE 11TH  
TO SCHEDULE  
717-252-2768 X011

NO REFRIGERATORS, AIR CONDITIONERS, PAINT,  
SMOKE DETECTORS OR BATTERIES PLEASE.



# Just a few things from the Tax Collector....

## 2025 Spring Sitting Schedule



Wrightsville Borough  
Randee A. Scritchfield,  
Tax Collector  
210 S. 2<sup>nd</sup> Street  
Wrightsville, PA  
Phone: 717-887-5992

[wwilletaxcollector@comcast.net](mailto:wwilletaxcollector@comcast.net)



### Credit/Debit Card Payments:

<https://www.allpaid.com/#/home>

### \*Wrightsville Borough Office:

Thurs April 3<sup>rd</sup> 3-5 pm

Sat April 5<sup>th</sup> 9-11 am

Wed April 9<sup>th</sup> 4-6 pm

### \*Wrightsville Fire Dept:

Tues April 1<sup>st</sup> 4-6 pm

Mon April 7<sup>th</sup> 3-5 pm

Thurs April 10<sup>th</sup> 3-5 pm





# Spring Cleaning!

As the mercury rises and plants begin to bloom, we naturally begin to think about how to freshen up our home. If you take advantage of the warmer temperatures to do some spring cleaning, feel free to access our website to learn how you can properly dispose of items that you no longer want or need. Simply use the search tool on our homepage at [www.ycswa.com](http://www.ycswa.com). You will have an answer within seconds.



## Spring Cleaning!

**FREE**

# Household Hazardous Waste Collection Events

## **DATES:**

**Saturday, May 3rd and  
Saturday, October 11th**

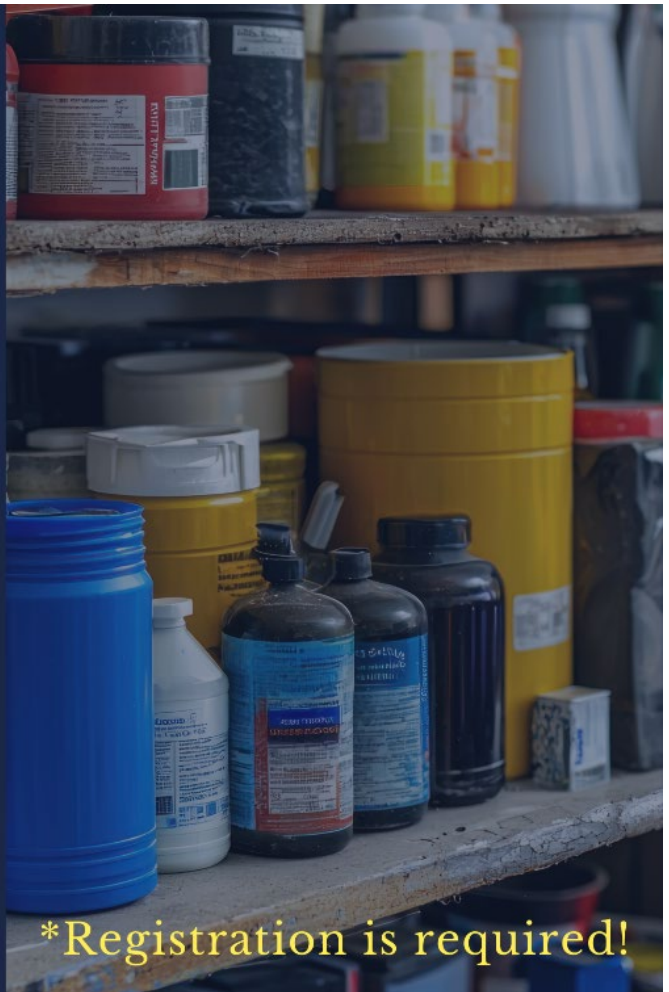
## **TIMES:**

**9:00 am-1:00 pm**



**YCSWA**  
Facilitating Responsible Waste Management

Visit [www.ycswa.com/services/waste-disposal/household-hazardous-waste/](http://www.ycswa.com/services/waste-disposal/household-hazardous-waste/) for more details.



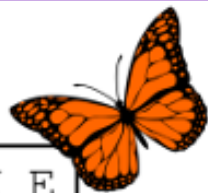
**\*Registration is required!**

## **YCSWA will hold two FREE Household Hazardous Waste (HHW) Collection Events this year!**

On Saturday, May 3<sup>rd</sup>, and on Saturday, October 11<sup>th</sup>, YCSWA will conduct **FREE** Hazardous Household Waste Collection Events from 9am-1pm. There is no fee for York County Residents, but **REGISTRATION IS REQUIRED**. Both HHW Collection Events will be held in the area behind YCSWA's Recycling Drop-Off Center. Look for additional information, and registration link, on the webpage below and on YCSWA social media pages closer to the time of each event. Visit [www.ycswa.com/services/waste-disposal/household-hazardous-waste/](http://www.ycswa.com/services/waste-disposal/household-hazardous-waste/) for more details.



# Spring Flowers



Word list:

AZALEA

CARNATION

COSMOS

CROCUS

DAFFODIL

DAISY

FORSYTHIA

GERANIUM

IRIS

LILAC

LILY

MARIGOLD

PANSY

PETUNIA

POPPY

ROSE

SUNFLOWER

TULIP

VIOLET

ZINNIA



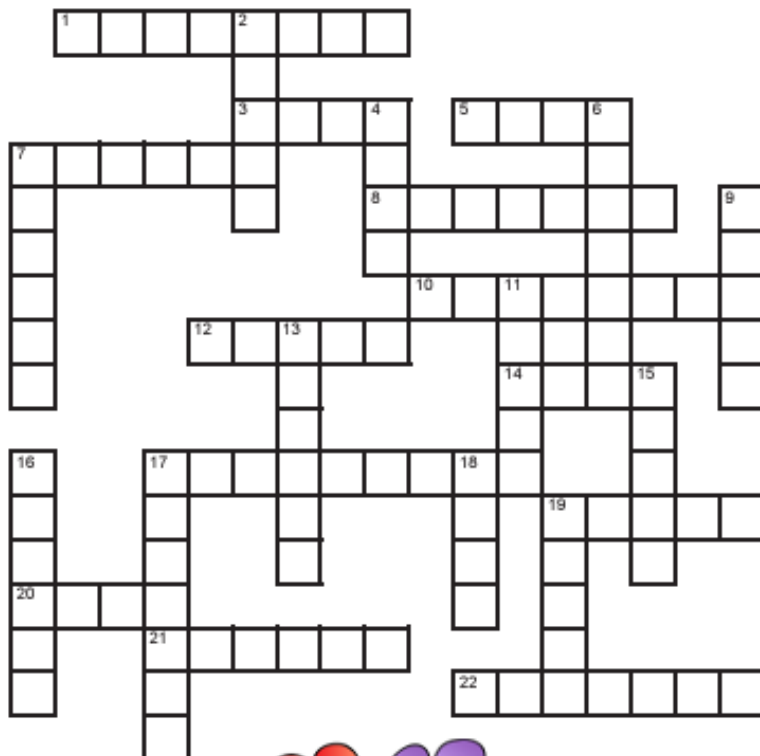
# Spring is Here!

## Across

1. It warms and brightens everything.
3. Warm up from a freeze.
5. They make honey.
7. Meal in the park.
8. Colorful arc in the sky.
10. It keeps the rain off you.
12. The color of spring grass.
14. Where a bird lives.
17. An adult caterpillar.
19. A baby chicken.
20. What chicks hatch from.
21. It comes after winter.
22. Red insect with black spots.

## Down

2. Come out of an egg.
4. Wiggly creature that lives in the ground.
6. Short rainfalls.
7. Small pool of rain.
9. What the lawn is made of.
11. Another name for a rabbit.
13. A spring holiday.
15. Holland is famous for this flower.
16. Just a little wind.
17. Flower on a tree.
18. It is green and on a plant.
19. It might hide the sun.



Word Bank: Bees, Blossom, Breeze, Bunny, Butterfly, Chick, Cloud, Easter, Eggs, Grass, Green, Hatch, Ladybug, Leaf, Nest, Picnic, Puddle, Rainbow, Showers, Spring, Sunshine, Thaw, Tulip, Umbrella, Worm



# Electronics Recycling York County Recovery Center



## York County Now Has New Electronics Recycling Locations!

Reworld™ and Goodwill Keystone Area have joined forces to provide free electronic waste recycling locations in central and southeastern Pennsylvania. This program utilizes Goodwill's network of stores and donation centers as designated collection points for consumer electronics. Reworld™ then takes the electronics and responsibly recycles them. Reworld™ is a proven provider of e-waste recycling, recovery and environmentally responsible disposal, having recycled more than 135 million pounds of e-waste. Take advantage of this service at the following Goodwill locations:

- 965 Loucks Road, York
- 1120 Roosevelt Ave, York
- 450 Eisenhower Drive, Hanover
- 535 S. Main Street Market Square Center, Shrewsbury

Free electronics recycling is also available at the York County Resource Recovery Center. For additional information, visit [www.ycswa.com/services/recycling/electronics/](http://www.ycswa.com/services/recycling/electronics/)

### **Reworld™ and Goodwill Keystone Area have joined forces to provide free electronic waste recycling locations**

Take advantage of this service at the following Goodwill locations:



- 965 Loucks Road, York
- 1120 Roosevelt Ave, York
- 450 Eisenhower Drive, Hanover
- 535 S. Main Street Market Square Center, Shrewsbury



#### What electronics can residents bring?

##### What will be accepted:

###### Computing and Peripheral Devices

Computers, Monitors, keyboards, mice, printers, printer/scanner/copier all-in-one devices, networking equipment

###### Entertainment Electronics

Video Players (VCR/DVD/Blu-ray players), Gaming Systems, Audio Devices (stereos, radios, MP3 players)

###### Communication Devices

Telephones, Mobile Devices

###### Visual and Imaging Equipment

Cameras (cameras, video cameras), Televisions, Cable or Set-Top Boxes

###### Small Appliances

Toasters, Vacuum Cleaners

###### Miscellaneous Electronics/Items

Cables, Electronic Wiring, Answering Machines



#### What electronics should residents NOT bring?

##### What won't be accepted:

Loose Batteries, Bulbs, Smoke Detectors, Hazardous Household Waste, White Goods (refrigerators, ranges, water heaters, freezers, unit air conditioners, washing machines, clothes dryers and other similar domestic and commercial large appliances), Preen-Containing Devices, Devices Containing Mercury



**Whether You Are Hosting a Backyard Barbeque or Coordinating the Largest Event in York County, You Can Borrow Easy to Use Trash and Recycling Receptacles From YCSWA For Free!**



## **Trash and Recycling Bins Available For Your Next Event from YCSWA!**

Whether you are hosting a backyard barbeque or coordinating the largest event in York County, you can borrow easy to use trash and recycling receptacles from YCSWA at no cost.

It is our goal to provide options to York County residents to help keep our community clean and safe. Simply contact our office at 717-845-1066 or email [m.waltemyer@ycswa.com](mailto:m.waltemyer@ycswa.com) for more information or to reserve trash and recycling bins.

## **Curbside Recycling**

Knowing what to put in your recycling bin is very important. If you put items into your recycling bin that do not belong there, the entire bin might be considered "contaminated." The contents of contaminated bins are collected and taken to our waste-to-energy facility instead of being recycled into a new product. Most municipalities offer curbside or drop-off recycling service. If you are confused about what should be deposited in the recycling bin, your first step is to contact your municipality for those details. Items accepted for recycling may vary depending on the type of recycling program and/or where you live. For additional information about curbside recycling in York County, visit:

[www.ycswa.com/services/recycling/household-times/](http://www.ycswa.com/services/recycling/household-times/)

**RECYCLE THESE ITEMS**

 	 	 
<p><b>CANS</b> Aluminum &amp; Steel</p>	<p><b>PLASTIC</b> Bottles &amp; Jugs 1, 2 &amp; 5</p>	<p><b>PAPER &amp; NEWSPAPER</b> Clean &amp; Dry</p>
 	 	 
<p><b>GLASS</b> Bottles &amp; Jars</p>	<p><b>CARDBOARD</b> Dry &amp; Flattened No Food Contact</p>	<p><b>CARTONS</b></p>

## **WHEN IN DOUBT → THROW IT OUT**

<b>NO</b> Plastic Bags	<b>NO</b> Shredded Paper	<b>NO</b> Medical Waste
<b>NO</b> Food/Liquid	<b>NO</b> Clothing	<b>NO</b> Scrap Metal
<b>NO</b> Garden Hoses	<b>NO</b> Diapers	<b>NO</b> Styrofoam

# Did you know that YCSWA offers a FREE Litter Disposal Program?



It's true! YCSWA's FREE LITTER DISPOSAL PROGRAM is available for any civic or service group that organizes a community or roadside clean-up. Participants must pre-register and follow guidelines to receive a vehicle placard which will enable them to deliver litter to the York County Resource Recovery Center at no cost.

Visit [www.ycswa.com/resources/resources-for-educators/free-litter-disposal-program/](http://www.ycswa.com/resources/resources-for-educators/free-litter-disposal-program/) for more details about YCSWA's FREE Litter Disposal Program.



Learn More About YCSWA's FREE Litter Disposal Program By Visiting [www.ycswa.com/free-litter-disposal-program/](http://www.ycswa.com/free-litter-disposal-program/)







# SAFETY REMINDERS

- ⚠ Fill the tanks of lawn mowers, motorbikes and power saws only when the motor is cool and not when in an enclosed area.
- ⚠ Store gasoline in an approved safety can and in a cool area away from the house in a detached garage or shed.
- ⚠ Dispose of old cans of paint, paint thinners, and accumulated newspapers in the proper manner.
- ⚠ Change the batteries in all detectors (smoke & carbon monoxide) every year. The actual detector (smoke & carbon monoxide) should be replaced every 10 years.
- ⚠ Test your smoke and carbon monoxide detectors to ensure they are working properly.
- ⚠ Conduct a family fire drill. Review and practice your family escape plan.
- ⚠ Barbeque gas grills (including gas hoses) and propane tanks should be inspected before use.
- ⚠ Fire is NOT the way to get rid of yard waste. The burning of leaves and any general yard waste is not permitted within the Borough of Wrightsville.



## Inside The Home

-  Test your home's smoke and carbon monoxide alarms.
-  Don't use electrical appliances with frayed cords.
-  Check for water around electrical appliances.
-  Clean debris from your clothes dryer lint trap and exhaust duct.

## Outside The Home

-  Remove dead leaves and other debris around foundations, decks, porches, and stairs.
-  Check grills for rust, worn parts, insects, grease, and other debris before use.
-  Grills should only be used when at least 10 feet away from your house or any building.





# PERMITS

## ZONING AND BUILDING PERMITS

All Zoning and Building permit paperwork is processed at the Borough office. Payment for both will also be collected at the Borough. If your project requires both a Zoning and Building Permit you will need to pay for each permit separately. Permit fees do not need to be paid until permit is approved and picked up.

## DO I NEED A PERMIT?

**It is unlawful for any person, firm or corporation to erect, construct, enlarge, alter, move, improve, remove, convert or demolish any building/structure without a permit.**

**NO WORK CAN BE STARTED UNLESS PERMIT IS ISSUED FROM BOROUGH OFFICE!!**



### **Zoning and Building Questions**

Solanco Engineering Associates LLC  
103 Fite Way, Suite C  
Quarryville, PA 17566  
717-786-0355



---

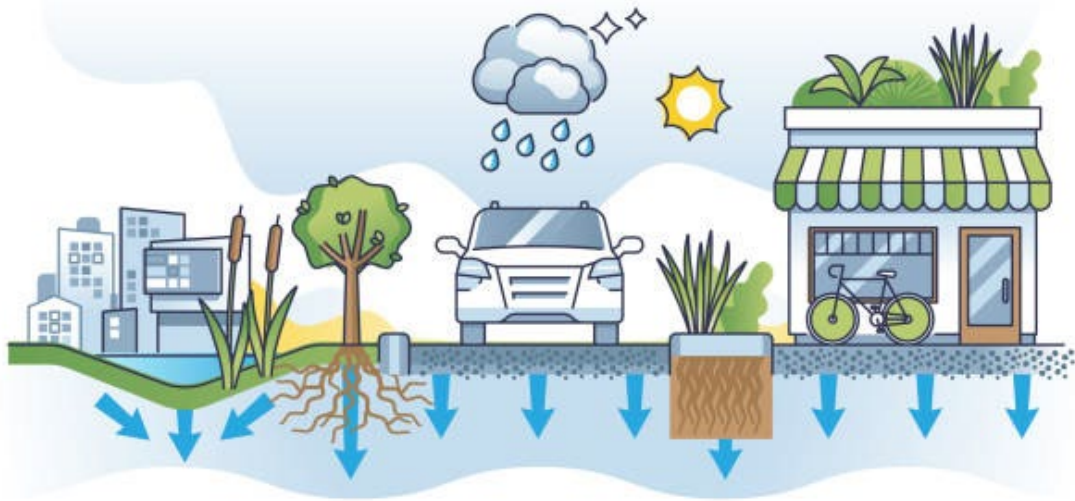
## PROOF OF INSURANCE

Proof of Insurance is required on all projects in the form of a **Certificate of Liability** listing **Wrightsville Borough** as the **certificate holder**. If a contractor is doing the work, their liability insurance information is required. If a contractor is not employed, the homeowner must provide a copy of their homeowners insurance in the form of a certificate of liability. This is typically called an ACORD file.

---

Permit application and other useful forms are located in the Borough lobby and also on the Borough website; [www.wrightsvilleborough.com](http://www.wrightsvilleborough.com)

# Effective Stormwater Management



## Adopt-A-Storm Drain

It is very important that we work together to keep our storm drains always working at 100% capacity. Leaves, grass clippings, trash, branches, etc. can cause blockage which may result in dangerous street flooding if a storm hits. Please report any damaged, or blocked, storm drain inlets right away by calling the Water Department at 717-252-3711

## The Effects of Pollution

Polluted stormwater runoff can have many adverse effects on plants, fish, animals, and people.

- **Sediment** can cloud the water and make it difficult or impossible for aquatic plants to grow. Sediment also can destroy aquatic habitats.
- **Excess nutrients** can cause algae blooms when algae die, they sink to the bottom and decompose in a process that removes oxygen from the water. Fish and other aquatic organisms can't exist in water with low dissolved oxygen levels.
- **Bacteria and other pathogens** can wash into swimming areas and create health hazards, often making beach closures necessary.
- **Debris**- plastic bags, six-pack rings, bottles, and cigarette butts that are washed into water bodies can choke, suffocate, or disable aquatic life like ducks, fish, turtles and bird.
- **Household hazardous wastes** like insecticides, pesticides, paint solvents, used motor oil, and other auto fluids can poison aquatic life.



# Municipal Authority

## Large Item Pick-Up Fees

**Please Note:** We cannot take metal bedframes or other metal objects.

Bed Frame (wood only) / Crib.....	\$5.00
Box Spring.....	\$5.00
Chair/Recliner.....	\$5.00
Mattress (Single).....	\$5.00
Mattress (Queen/King).....	\$10.00
Love Seat.....	\$10.00
Sofa (Regular size).....	\$10.00
Sofa (Sectional or Sleeper).....	\$15.00
Tub (Fiberglass).....	\$10.00



Please contact our office at 717-252-2768, extension 011 or 012 for items not on the above list.

**PLEASE CONTACT THE OFFICE TO ARRANGE FOR PAYMENT AND PICK UP OF YOUR LARGE ITEM. PAYMENT MUST BE RECEIVED BY END OF DAY WEDNESDAY FOR FRIDAY PICKUP.**

**ONLY CHECK OR MONNEY ORDER WILL BE ACCEPTED.**

### **NOT ACCEPTABLE:**

#### **ELECTRONIC DEVICES OF ANY KIND**

Toilet/Bathtub (porcelain)

Lawn Mowers

Appliances

Hot Water Heaters



**For these items you may call:**

York County Solid Waste Authority (717) 845-1066 or Modern Landfill (717) 246-2686

# Message from Stormwater Authority & Municipal Authority

**ADMINISTRATION OFFICE DOES NOT ACCEPT CASH. ALL PAYMENTS  
MUST BE MADE WITH A CHECK OR MONEY ORDER.**

**THANK YOU.**



## **Swift Reach Information**

In our efforts to provide more reliable communication with residents and businesses, we have implemented Swift Reach Networks, Inc. as our Emergency Notification System. Swift 911 in its simplest form is a system that makes phone calls to specific people or areas in the event of an emergency or for sharing important information. All calls you receive will have Caller ID of "Wrightsville Borough Municipal Authority"

**Sign Up Online at:** [www.wrightsvilleborough.com/swiftreach.htm](http://www.wrightsvilleborough.com/swiftreach.htm)

## **Paperless Billing**

If you would like to receive your water bill electronically, please email Lorri Harmer at [lharmar@wrightsvilleborough.com](mailto:lharmar@wrightsvilleborough.com) with the email address with which you would like to receive your water bill. Please include your account number and service address in this email as well.

### **WATER BILL DUE DATES**

- April 9, 2025
- May 7, 2025
- June 11, 2025
- July 9, 2025

*Utility Bill  
Reminder*



All billing inquiries, or questions, please contact the Municipal Authority Office at 717-252-2768, extension 011 or 012



# How To Reach Your Wrightsville Borough Council Members



- **Joseph Giandalia:** Council President
  - [jgiandalia@wrightsvilleborough.com](mailto:jgiandalia@wrightsvilleborough.com)
- **Brian Lyle:** Council Vice President
  - [blyle@wrightsvilleborough.com](mailto:blyle@wrightsvilleborough.com)
- **Eric J. White:** Councilman
  - [ejwhite@wrightsvilleborough.com](mailto:ejwhite@wrightsvilleborough.com)
- **Mike Gromling:** Councilman
  - [mgromling@wrightsvilleborough.com](mailto:mgromling@wrightsvilleborough.com)
- **Alicia Ferrari:** Councilwoman
  - [aferrari@wrightsvilleborough.com](mailto:aferrari@wrightsvilleborough.com)
- **Sara Barrett:** Councilwoman
  - [sbarrett@wrightsvilleborough.com](mailto:sbarrett@wrightsvilleborough.com)
- **Tayne Slenker:** Mayor
  - [tslenker@wrightsvilleborough.com](mailto:tslenker@wrightsvilleborough.com)

# SEE YOU NEXT SEASON

## ~BOROUGH OFFICIALS~

### Ward 1

**Michael  
Gromling**

Councilman

**Brian Lyle**

Vice President

### Ward 2

**Sara Barrett**

Councilwoman

**Eric J. White**

Councilman

### Ward 3

**Alicia Ferrari**

Councilwoman

**Joseph  
Giandalia**

President

**Tayne Slenker**

Mayor



**WRIGHTSVILLE BOROUGH  
MUNICIPAL OFFICE  
HOURS OF OPERATIONS  
MONDAY-FRIDAY  
9AM-4:30PM**

601 Water Street ~ PO Box 187

Wrightsville, PA 17368

Phone: 717-252-2768

Ext 011 – Municipal Authority

Ext 012 & 013 – Borough

Fax: 717-252-0725

[www.wrightsvilleborough.com](http://www.wrightsvilleborough.com)

*The governing body of Wrightsville Borough wishes everyone  
a safe and enjoyable Spring!*

