

April 2025



Connecting Our Communities

Facilitating communication and exchange of ideas in local municipal planning



Should Accessory Dwelling Units (ADUs) be considered as a permitted housing option in our municipality? (Spoiler Alert, the answer is YES!)

What is an ADU? We have seen many different options that seem to center around the common theme of an ADU being a smaller, secondary home on the same lot as a primary dwelling which is independently habitable. ADUs provide the basic requirements of shelter, heat, cooking and sanitation for human habitation.

In This Newsletter:

- LGAC/YCPC Actions
- The Course in Zoning
- Commissioner's Corner
- Municipal Spotlight
- YCSWA Free Litter Disposal
- NEVI
- Flooded Roadways Inventory
- Bike and Ped Dashboard
- Community Development Survey

There are generally two types of ADUs:

- Detached structures, such as garden cottages, converted detached garages or new construction; and
- Attached structures or accessory suites that are constructed to join the primary dwelling, such as converted living space, basements or attics, attached garages, additions, or combinations of these.

ADUs can be allowed in certain situations to:

- Provide accessible housing for seniors and persons with disabilities;
- Provide housing that responds to changing family needs, smaller households, and increasing housing costs;
- Support more efficient use of existing housing stock and infrastructure;
- Create new housing units while respecting the look and scale of single-dwelling development; and
- Offer environmentally friendly housing choices with less average space per person and smaller associated carbon footprints.

Municipalities can make decisions as to where ADUs would be permitted, the number that would be allowed and at what density, the permitted size limitation, and under what conditions.

ADUs make use of the existing infrastructure and housing stock, and they're also environmentally friendly and respectful of a neighborhood's pace and style.

When these basic parameters are followed, ADUs can provide a beneficial alternative to standard housing.



How Many Townships and Boroughs can you name in 10 minutes?

Take the quiz to find out!

**Proposed Ordinance/
Plan/Map Amendments**

**LGAC/YCPC
ACTIONS**

**Recommended Actions
Staff LGAC YCPC**

YCPC Project #25-010 - North Codorus Township Zoning Ord Amend Text: Flexible Residential Overlay	Adopt	Adopt	Adopt
YCPC Project #25-011 - Springettsbury Township Zoning Ord Amend Text: F-D Flexible Development District	Adopt	Adopt	Adopt
YCPC Project #25-012 - East Hopewell Township Zoning Ord Amend Text: Alternative Energy Systems	Not Adopt	Not Adopt	Not Adopt

**Seating is limited!
Register Early!**

The Course in Zoning is a program of the PA Municipal Planning Education Institute (PMPEI), an educational collaboration of the PA Chapter-American Planning Association and the PA State Association of Boroughs.

The Course in Zoning



This 3-session, 10-hour Course in Zoning will benefit planning commission and zoning hearing board members, zoning officers, elected officials, and professional planning staff.

Registration

**Wednesdays
May 14, 21, 28
5:30 - 9:00 PM
\$30/person**

**York County Office of
Emergency Management
120 Davies Drive
York, Pa 17402**

**Questions? Contact:
Pam Shellenberger
717-771-9870 x 1768
pshellenberger@ycpc.org**

**Registration Deadline May 5, 2025
or until course is full.**

Ten-year Countywide Initiative is First of its Kind in the Nation

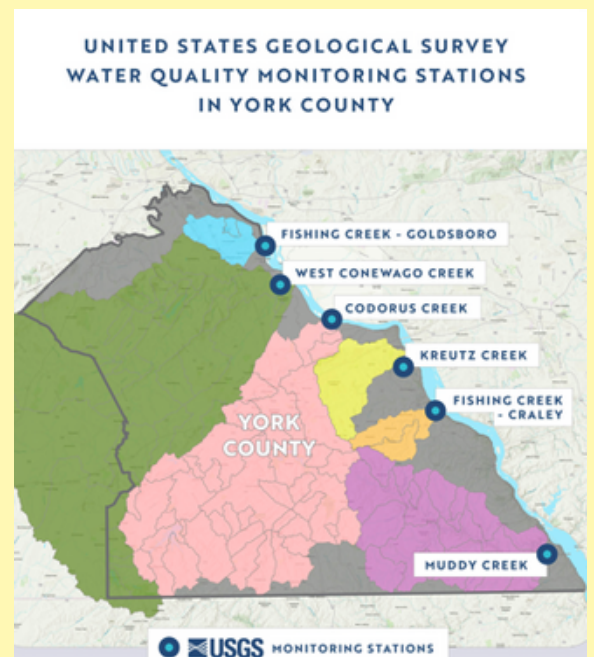
As the nation celebrates Earth Day, York County officials announced the county's water pollutant levels are significantly lower than initially reported by the state, according to data from the county's 10-year Water Quality Monitoring initiative – the first of its kind in the state and the nation.

“We are the first county in Pennsylvania and the entire nation to undertake this kind of innovative water quality monitoring program,” said York County President Commissioner Julie Wheeler. “Here in York County, we pride ourselves on the responsible stewardship of our precious land and waterways.”

The county began its Water Quality Monitoring program in 2020, following a 2019 report from the Pa. Department of Environmental Protection (DEP) that claimed York County was the second-highest contributor to key pollutants of nitrogen, phosphorous and sediment entering the Susquehanna River and the Chesapeake Bay. The DEP had used computer-modeling to generate its water quality data, prompting York County to develop a real-time water quality monitoring program.

Through York County's first-of-its-kind partnership with the U.S. Geological Survey (USGS), the county has been able to capture accurate data from six state-of-the-art water quality monitoring stations along the county's eastern boundary. The data from 2020 through 2024 indicate that the pollutant levels are lower than what the state DEP had reported – in some cases, exponentially lower. The monitoring stations capture data from Fishing Creek at Goldsboro and Craley, Codorus Creek, Kreutz Creek and Muddy Creek. The stations capture data round-the-clock and year-round, providing an accurate real-time and long-term picture of the water quality at each station.

The county's 10-year water monitoring partnership with the USGS is now at its halfway point – providing critical real-time data that can now be used to help measure the county's ongoing progress at reducing pollutants into the waterways. “As we work to implement strategies to further protect our waterways, we all benefit when our efforts are directed by sound, robust data,” said Andrew D. Dehoff, executive director of the Susquehanna River Basin Commission. “We applaud York County and the USGS for developing this innovative, data-first program, which can help inform our pollutant-reduction efforts moving forward. Our hope is that this will be a model for other counties to ensure their efforts are based on the best data available.” **[SEE MORE](#)**



For more information on York County's Water Quality Monitoring initiative, visit yorkcountywqm.org

MUNICIPAL SPOTLIGHT EAST PROSPECT BOROUGH

East Prospect is a little Borough with a lot of heart. We don't have a lot of resources (money and staff), but that has never stopped East Prospect from being a great place to live. Volunteers make our sense of community what it is.



East Prospect not only has several committees, an active and intentionally moderated Neighbors page on Facebook, it has an abundance of local business owners and entrepreneurs. The local Church, Lions club, Police Department and Fire Department are also very engaged with the community.

During the summer there is a Community Yard Sale Day, Memorial Day Parade, Story Time at the Park, Car Show, Turkey Suppers, Fire Works etc! All of these things are run by volunteers, your neighbors!

With two proposed new developments going in there was concern about the playground. Part of what the Borough will require is funds for the Park to be expanded. Council is looking for interested individuals who would be interested on serving on a Recreation Fund Committee. You do not have to live in East Prospect to be a part of this committee! Interested individuals should reach out to the Borough Office (717) 252-0177.

This will be an opportunity to help decide how the funds from the developments would be spent. Shade, more swings, another pavilion etc?

FOR MORE INFO AND EVENTS [CLICK HERE](#)

Did you know that YCSWA offers a FREE Litter Disposal Program?



www.ycswa.com/resources/resources-for-educators/free-litter-disposal-program/
for more details about YCSWA's
FREE Litter Disposal Program.

It's true!

YCSWA's FREE LITTER DISPOSAL PROGRAM is available for any civic or service group that organizes a community or roadside clean-up. Participants must pre-register and follow guidelines to receive a vehicle placard which will enable them to deliver litter to the York County Resource Recovery Center at no cost.

What is NEVI?

NEVI stands for the National Electric Vehicle Infrastructure program, this is the program that expands the locations for electric vehicle charging stations. As of 2023 there are 1517 electric vehicles registered in York County.

PennDOT has the final round of funding opened until the end of June for new installations of electric vehicle charging stations. YCPC planners are looking to find interested municipalities who are interested in seeing new Electric Vehicle charging stations in their communities.

We want to hear from you!



Whether you have an electric vehicle or not, we want to hear where new charging stations should be installed and what destinations should be our top priorities for future chargers. Complete the survey [here](#).

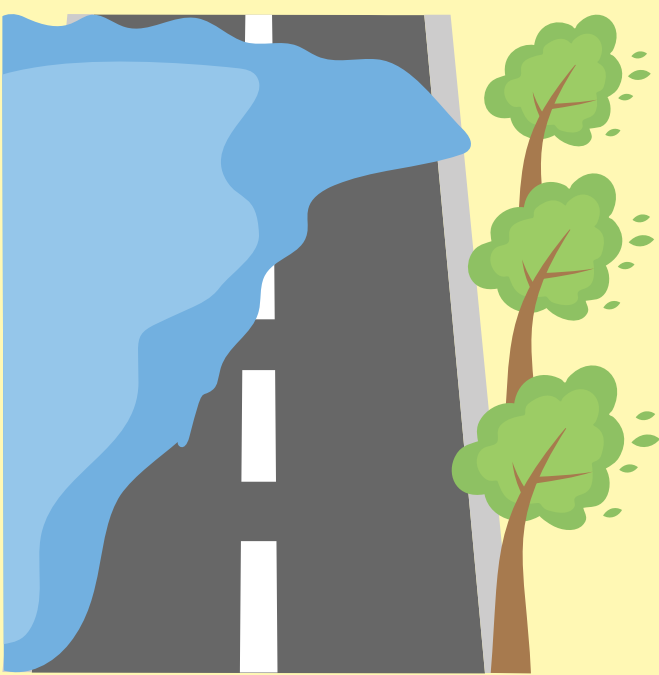
Community Workshop

On May 8th York County Planning Staff are hosting a community workshop to discuss use case priorities and find municipalities interested in expanding York County's Electric Vehicle charging network.

May 8th Workshop
9:00am-11:00am
York County 911 Center
120 Davies Drive, York, PA 17402
Front Meeting Room

Email Mateo Lariviere - mlariviere@ycpc.org
if you are interested in attending the workshop.

Flooded Roadways Inventory



Please take an opportunity to familiarize yourself with the Flooded Roadways Inventory available on York County's GIS page, under Municipal Resources: <https://york-county-pa-gis-portal-yorkcountypa.hub.arcgis.com/>

An email and link will be sent to municipalities AFTER a significant rain event in York County as a reminder to complete the form if you experienced any flooded roadways. Please complete this any time a location in your municipality has an issue with flooded roadways. The York County Planning Commission will send the link to Municipal Managers, Roadmasters, and Public Works Directors as a reminder, but you may access and submit this survey at any time.

The information collected is used in multiple ways, including:

- Shared with PennDOT during project scoping & preliminary engineering
- Alerts YCPC if an area roadway is closed or inaccessible for a period of time.
- Assists YCPC with Flooded Roadway Plans and updates.

Please note: If you have multiple locations experiencing flooding, a new form must be submitted for each location.

To submit, you will need to have the following prepared:

- Date & time roadway was closed.
- Date & time roadway reopened.
- Municipality (Where the flooded roadway is located)
- Description of the event: ex. - "Emig Rd over trib to Codorus Cr."
- Yes or No: If the road needed repairs and had to remain closed after the flood water receded.

Optional Additional Information:

- Secondary Municipality (if this flooded location crossed municipal boundaries)
- Photo upload

If you have issues logging into this site, please contact the York County Transportation Planning Department at transportation@ycpc.org.



Introducing YCPC's Interactive Bicycle and Pedestrian Dashboard



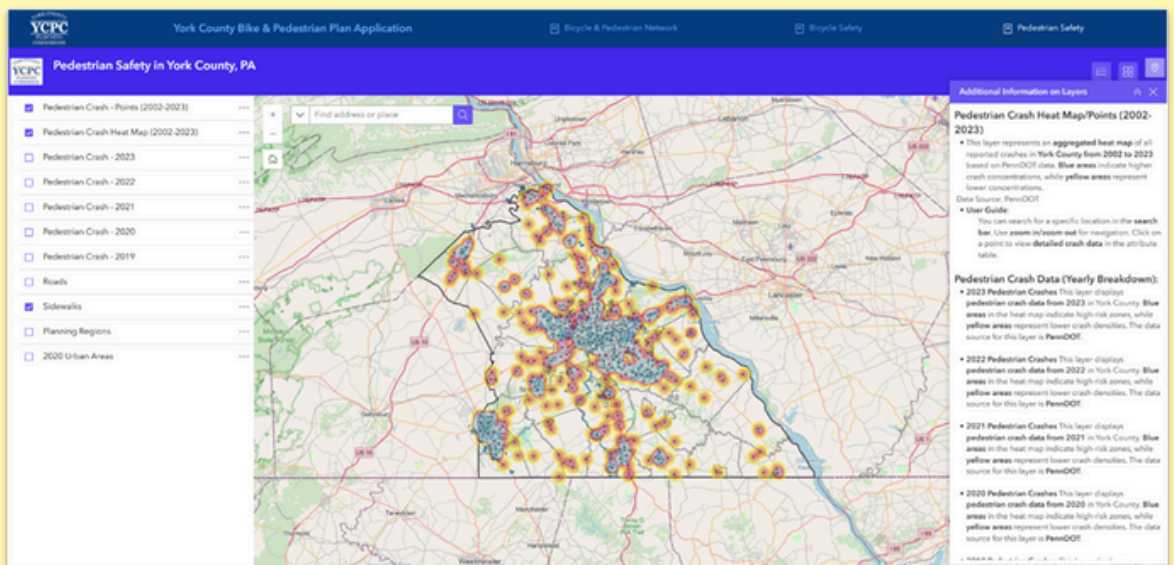
In alignment with the goals of the York County Bicycle and Pedestrian Plan (adopted June 22, 2023) and in accordance with the YAMPO Complete Streets Policy (adopted December 5, 2024), the York County Planning Commission (YCPC) has developed and launched a new interactive dashboard focused on bicycle and pedestrian infrastructure and safety.

As outlined in Section 3 of the Complete Streets Policy: Application of the Policy, a key objective is to create a continuous, interconnected multimodal transportation network that ensures equitable access and safety for all users—pedestrians, cyclists, motorists, and public transit riders. The release of this dashboard is a vital step toward achieving that vision through data-driven transparency, collaboration, and informed planning.

Access the Dashboard:

<https://experience.arcgis.com/experience/16ec2b2e044f4c7b80c63c61e4d9574e>

About the Dashboard: The dashboard contains three interactive web maps, presenting crash data and multimodal infrastructure layers related to pedestrian and bicycle transportation across York County, covering the period from 2002 to 2023:



Community Development Survey for the Consolidated Plan 2025-2029

The Community Development Survey contributes to the Needs Assessment component of the Consolidated Plan for York County. The Consolidated Plan is a five-year plan that states the county's needs, develops a strategic plan for those needs, and is implemented by the Annual Action Plan. It helps the York County Board of Commissioners determine where the Housing and Community Development funding will be used in part. We are seeking input from municipalities and community social service organizations by May 6, 2025.

Thank you!

<https://forms.office.com/r/6gxds3B9a2>



Have a question about an existing or proposed electric transmission line or pipeline and don't know where to start?

We know the feeling.



York County has had its share of proposed new electric transmission lines with the occasional new pipeline thrown in the mix in recent years.

To assist you with finding the answers you want, we have put together an informational website providing a general overview of major pipelines and transmission lines, those operating these facilities in York County, regulatory agencies, non-regulatory agencies, resources, and a mapping tool to help guide you to the answers you are looking for.

You can start your information quest by going to [**Pipelines and Electric Transmission Lines | York County Planning Commission PA.**](#)

Questions regarding this information should be directed to Roy Livergood at (717) 771-9870 ext. 1756 or [**rlivergood@ycpc.org.**](mailto:rlivergood@ycpc.org)

