



Connecting Our Communities

May 2025

**Facilitating communication  
and exchange of ideas  
in local municipal planning**

## In This Newsletter:

- **LGAC/YCPC Actions**
- **Federal Funding for Homeless**
- **Commissioner's Corner**
- **York County Hazard Mitigation**
- **Municipal Spotlight - Felton Boro**
- **York County Community Survey**

## York County Tourism Grant Program

Explore York and the York County Commissioners have established a matching grant program aimed at boosting tourism in York County.

This program is funded through a hotel room tax enacted by the York County Commissioners and provides financial support to initiatives deemed capable of generating broad and substantial benefit to York County tourism.

**2025 Round 2 Application Cycle:  
June 1-July 15, 2025**

**2026 Round 1 Application Cycle:  
January 1-February 15, 2026**

For More Information Visit

<https://www.yorkpa.org/grants/>



## What is the York County Property Viewer?

Over 20 mapping applications are available to the public on the [York County GIS Portal](#), providing detailed information about York County through interactive maps. The most visited application by far is the [York County Property Viewer](#), with an average of 1,600 users every day. This application primarily helps users understand a parcel's tax liabilities. However, users can find far more than just tax information in the property viewer, including owner information, land use classification, acreage, assessed land & building value, and property sale dates, to name a few.

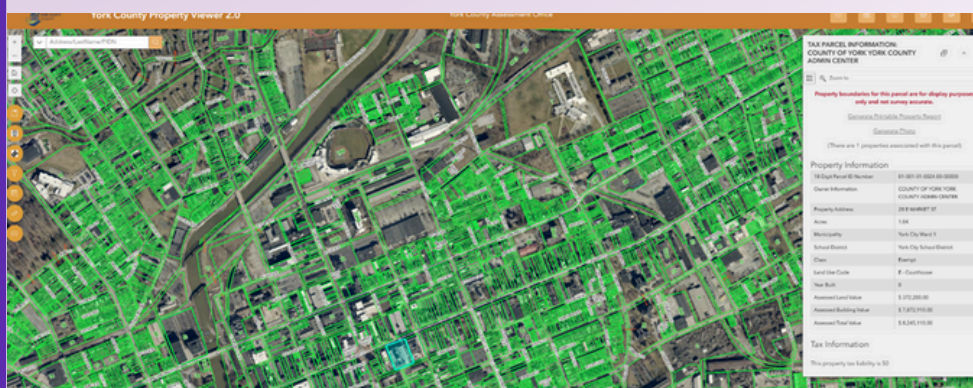
This application combines current aerial images with the York County Office of Assessment & Tax Claim's database to provide users with an overview of every parcel in the county.

The YCPC Information Systems Department frequently receives questions about the accuracy of the parcel boundary lines shown on the property viewer, compared to the available aerial imagery and surveys. Users of the property viewer should be aware that the parcel boundary lines shown in the viewer are not survey accurate and are for display purposes only.

There are also several tools available in the Property Viewer which users might find helpful, including:

- **Measurement Tool:** Get approximate linear and area measurements
- **Generate Printable Property Report:** Create a 1-page report of the property selected, showing an aerial of the property and relevant parcel information
- **Buffer Parcel Tool:** Type in a Parcel Identification Number (PIDN) and a search distance, and the application will visually show the buffer distance on the map
- **Select by Attribute Tool:** Type in a PIDN and search distance, and the application will return all parcels within the designated search distance. These results can be exported into an Excel or CSV file
- **Swipe Tool:** Compare imagery from different years
- **Additional Information Tab:** Find links to the Assessment and Tax Claim Office's real-estate page, as well as links with more details on the Clean & Green, Homestead & Farmstead, LERTA, and ReTAP Programs

The York County Property Viewer is a great tool for professionals in the public and private sectors, as well as current and prospective homeowners, who want to better understand property taxes in York County.



## Proposed Ordinance/ Plan/Map Amendments

## LGAC/YCPC ACTIONS

## Recommended Actions Staff LGAC YCPC

<u>YCPC Project #25-013</u> - 2025 Springettsbury Township Comprehensive Plan Comprehensive Plan Update	Adopt	Adopt	Adopt
<u>YCPC Project#25-014</u> - Winterstown Borough Zoning Ordinance Amendment Text: Principal Solar Energy Systems	Not Adopt	Not Adopt	Not Adopt
<u>YCPC Project #25-015</u> - Hopewell Township Zoning Ordinance Amendment Text: Wireless Communication Facilities	Not Adopt	Not Adopt	Not Adopt
<u>YCPC Project#25-016</u> - Warrington Township Zoning Ordinance Amendment Text: Accessory Solar Energy Systems (ASES)	Adopt	Adopt	Adopt
<u>YCPC Project#25-017</u> - Carroll Township and Dillsburg Borough Multi-Municipal Comprehensive Plan Joint Comprehensive Plan	Not Adopt	Not Adopt	Not Adopt
<u>YCPC Project #25-018</u> - New Freedom Borough Zoning Ordinance Amendment Text: Solar Energy Facilities - Decommissioning	Adopt	Adopt	Adopt

## York County Secures Over \$3.1 Million in Federal Funding to Support Local Homeless Services

The U.S. Department of Housing and Urban Development (HUD) has awarded York County \$3,157,139 through the 2024 Continuum of Care (CoC) competitive grant program, which funds critical services and housing for individuals and families experiencing homelessness. Although awarded in 2024, these funds will support local programs throughout 2025.



The CoC Program is a vital component of our community's strategy to prevent and end homelessness. The funding supports a variety of project types that assist those experiencing homelessness in moving into permanent housing of their own. CoC funds also support data analysis, and centralized housing referrals, through staff housed at the York County Planning Commission. These projects provide housing stability and supportive services to some of our most vulnerable residents and allow for gaps analysis and performance measurements.

York County performed exceptionally well in the highly competitive national funding process. Our community earned 173 out of 200 possible points on the application, well above the national median score of 151.5. The highest-scoring CoC in the country received 185.5 points, while the lowest scored 54.4. Our strong performance not only secured renewal funding for ongoing programs but also enabled us to obtain new dollars to expand an existing project.



York County received an expansion award to double the scope of a program serving survivors of domestic violence in the Hanover area-- a critical step in meeting emerging community needs and strengthening regional service capacity.

This achievement reflects the strength of our local partnerships, the dedication of service providers, and a shared commitment to ensuring that everyone in York County has a safe and stable place to call home.



A healthy community requires a focus on ensuring access to care for those who need it. That's why York County and Family First Health are working on an innovative program to enhance access to comprehensive primary care for individuals reentering the community from incarceration.

The partnership, which started in January, is the result of a \$1 million grant from the federal Health Resources and Services Administration (HRSA) – making York County the first in Pennsylvania to launch a program aimed at delivering healthcare to incarcerated individuals nearing release.

Family First Health is partnering with the York County Reentry Coalition on the program, reflecting the county's commitment to addressing the unique health challenges faced by justice-involved individuals and improving overall community well-being. The collaboration is designed to bridge critical gaps in care, ensuring a smooth transition to community-based services and reducing the risk of health crises during reentry.

Formerly incarcerated individuals face disproportionately high rates of chronic conditions, mental health challenges, and substance use disorders. Nationwide, they are 10 times more likely to die from opioid overdose compared to the general population. Locally, York County Prison's June 2024 data highlights the urgency of this issue:

- 86% of inmates had a mental health diagnosis.
- 34% had a substance use disorder.
- 22% were receiving medication-assisted treatment for opioid use disorder.

Those leaving incarceration without having access to care for these health needs run a greater risk of returning to the judicial system. By contrast, access to consistent treatment for mental health and substance use disorder can prevent relapse and reduce recidivism.

“York County is a community that comes together through collaboration and innovation to solve some of our most pressing issues,” said York County President Commissioner Julie Wheeler. “Through this innovative partnership with Family First Health, we are leading the way in addressing both the physical and behavioral healthcare needs of those who leave incarceration and reenter our community, creating a healthier York County.”

As a follow-up to the recently adopted 2024 York County Hazard Mitigation Plan, staff of the YCPC updated the Hazard Mitigation Viewer to further implement the Plan. The Viewer now incorporates transportation incidents and substance use disorder for a total 25 identified hazards. The hazard profiles, actions, mapping, related agency contact information, and hazard mitigation resources were also revised to be consistent with the 2024 Plan. The Hazard Mitigation Viewer can be accessed by clicking on this link-

[\*\*York County Hazard Mitigation Viewer\*\*](#)



# Municipal Spotlight Felton Borough



Felton Borough was incorporated as a borough on May 8, 1899, annexed from land of Chanceford Township, North Hopewell Township and Windsor Township. Though its history can be traced to the early 19th Century when a mill was in operation in the area, and the first mercantile business opened in 1850. With Pine Run and Muddy Creek flowing through the site, water power for such milling operations was available. In 1863, Tobias Crumbling built a gristmill on the borough site, which later became the Felton Milling Company, operating until 1994. It was not until the construction of the York and Peach Bottom Railway in 1874, later known as the Maryland and Pennsylvania Railroad, that the settlement started to grow. In that same year the settlement was named after one of the financiers of the earlier railroad.

In 1883 the first school building was opened. It expanded in 1902 to two rooms for eight grades and was abandoned in 1956 after becoming a part of Red Lion Area School District. St. Paul's Lutheran Church, now known as Son Light Chapel, was constructed in 1888 and the original Bethany Evangelical Church, now known as Bethany Felton UMC, was built in 1896.

By 1921, the borough consisted of 85 homes with a population of 400 persons and included a milling operation, several cigar manufacturers that employed more than 85 people, and multiple businesses. To serve the growing community there was also a general store, a meat market, barber, auto repair garage, coach shop and hotel. There was also a gravity feed water system that served part of the borough. Much of the agricultural production of the area was being shipped via the Ma and Pa Railroad, including potatoes, hay, cordwood, cigars, flour, and feed.

A small park was established in the center of town at the corner of Charles Street and Main Street. The original monument honoring war veterans was constructed locally and placed in the park. Following World War II, the original monument was removed and a new memorial was erected to honor and remember all veterans who served, especially those who paid the supreme sacrifice. Today the gazebo located in the park is the historical focal point of the borough where volunteers continue to decorate the gazebo each year at Christmas.

The Felton Volunteer Fire Company, now known as Alliance Fire & Rescue, was organized in 1928, acquiring its first truck the following year. The fire house was built in 1953, but was soon expanded due to the many activities of the Felton Fire Company Ladies Auxiliary.

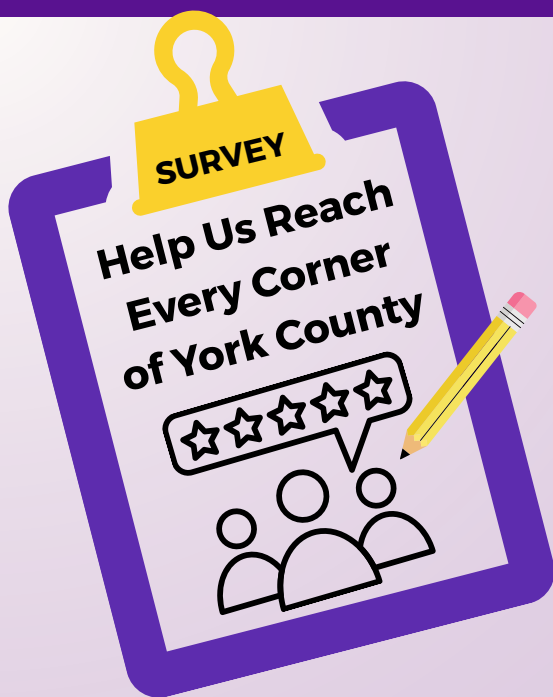
The first Felton Baseball team began sometime between 1910 and 1915, and in 1926 a playing field with a covered wooden bandstand was constructed. The present baseball field was dedicated to the borough in 1946 and still hosts the Felton Team of the Susquehanna League.

Two streams known as Pine Run and Muddy Creek run through the borough. With Muddy Creek being well known for its trout, local Fish and Game Commissions stock yearly and hold an annual Kid's Only Fishing Event for one week in April.



Today the Felton Borough community consists of 204 homes, two Churches, a Volunteer Fire Company, a pizza shop, computer shop and other local businesses. A new pavilion and playground were constructed in 2021 thanks to a Community Conservation Partnerships Program Grant administered by the Department of Conservation and Natural Resources (DCNR). The Borough Council continues to actively seek grant funding to complete updates to the boroughs roads, storm drainage systems and parks.





# York County Community Survey Nears Final Weeks

In March, the York County Planning Commission (YCPC) launched the 2025 Community Survey to gather input from residents on key quality of life topics throughout the county. As the survey enters its final weeks, YCPC is continuing its outreach to encourage broad and representative participation especially from areas where responses have been limited.

The survey covers a wide range of topics, including healthcare, transportation, education, childcare, employment, housing, and food security. It also includes general demographic questions to help build a more complete picture of York County's population and guide future planning efforts.

As of May 19, we've received responses from **1,438 residents**, with participation from **66 out of 72 municipalities**. The five municipalities with the highest response rates so far are:

- **York City – 7.3%**
- **Dover Township – 6.8%**
- **Spring Garden Township – 6.8%**
- **Springettsbury Township – 6.4%**
- **Fairview Township – 5.2%**

Our goal is to reach all 72 municipalities and gather input that reflects the needs and experiences of each community. Municipal officials and staff are valuable partners in this effort. If you're in a position to help share the survey - whether through a website, newsletter, social media post, or bulletin board - your support would be greatly appreciated.

**Take the Survey: [www.YorkCountyPASurvey.org](http://www.YorkCountyPASurvey.org)**

**Open through June 22**

YCPC is grateful for the continued partnership of municipal leaders across the county. Every additional voice helps inform data-driven planning and ensures that countywide decisions are shaped by residents' perspectives.

If you'd like any promotional materials or have questions about the survey, feel free to reach out to **Abby Gibb at [agibb@ycpc.org](mailto:agibb@ycpc.org)**