



Pennsylvania
Department of Transportation

FOR IMMEDIATE RELEASE
August 23, 2024

MEDIA CONTACT: Dave Thompson, 717-418-5018, dmthompson@pa.gov

**Schedule Update: Bridge Rehabilitation Project to Begin on Route 177
(Rosstown Road) in York County**

Traffic will be detoured

Harrisburg, PA – The Pennsylvania Department of Transportation (PennDOT) announced today that a bridge rehabilitation project scheduled to begin Monday, August 26, on Route 177 (Rosstown Road) in York County, will now begin the following week. The bridge spans Beaver Creek and Pinchot Lake just south of Pinetown Road at Gifford Pinchot State Park in Warrington Township.

Weather permitting, work will begin Tuesday, September 3. The bridge will be closed. A detour will be in place using Route 74 and Alpine Road (Route 4019).

All work is expected to be completed by April 24, 2025.

The project includes replacing the bridge superstructure which includes the bridge beams, deck and barrier.

Doli Construction Corp. of Chalfont, PA, is the contractor on this \$1,485,227 project.

Motorists can check conditions on major roadways by visiting www.511PA.com. 511PA, which is free and available 24 hours a day, provides traffic delay warnings, weather forecasts, traffic speed information and access to more than 1,000 traffic cameras.

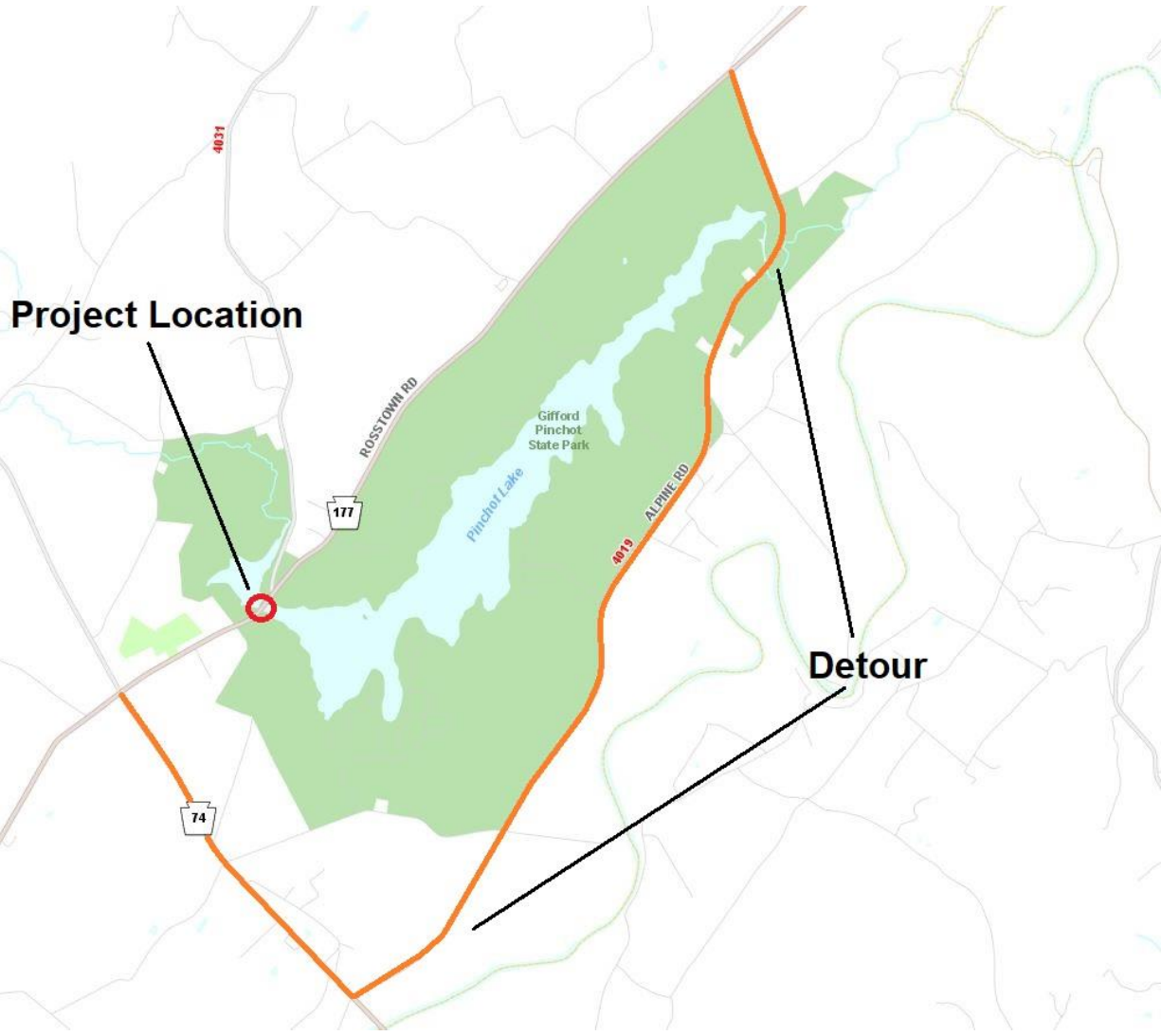
Subscribe to PennDOT news and traffic alerts in Adams, Cumberland, Dauphin, Franklin, Lancaster, Lebanon, Perry and York counties at [PennDOT District 8](#).

Information about infrastructure in District 8, including completed work and significant projects, is available at [District 8 Results](#). Find PennDOT's planned and active construction projects at [PennDOT Projects](#).

Follow PennDOT on [X](#), and like the department on [Facebook](#), and [Instagram](#).

###

Please refer to the project location map below:



Project Location

Detour

ROSSTOWN RD

Gifford Pinchot State Park

Pinchot Lake

ALPINE RD

74

177

4031

4019