

DUBOISTOWN BOROUGH

2651 Euclid Avenue, DuBoistown PA 17702

570-323-3646

abaker@duboisstownborough.org

NOTICE

**DUBOISTOWN BOROUGH COUNCIL APPROVED TO CHANGE SORTMAN AVE
TO ALLOW TWO WAY TRAFFIC.**

**SORTMAN AVENUE HAD BEEN A TWO-WAY STREET UNTIL 2018 WHEN IT WAS
CHANGED TO ONE WAY.**

**THE DUBOISTOWN BOROUGH HAS REVIEWED THE REQUEST TO CONVERT IT
BACK TO TWO WAY TRAFFIC AND TOOK A PUBLIC VOTE AT THE SEPTEMBER
7, 2023 COUNCIL MEETING PASSING WITH 6 COUNCIL MEMBERS VOTING YES
TO THE CHANGE AND 1 MEMBER VOTING NO. THE MOTION WAS CARRIED
AND APPROVED.**

PUBLIC WORKS WILL MAKE THE CORRECTIONS TO THE SIGNAGE.

THIS IS THE 30-DAY NOTICE OF THE CHANGE

**TWO WAY TRAFFIC WILL BE PERMITTED AS LONG AS SIGNAGE IS IN PLACE
STARTING OCTOBER 9TH 2023.**

**NOTICE PARKING IS ONLY PERMITTED ON ONE SIDE OF THE STREET AND
SIGNAGE WILL BE POSTED.**

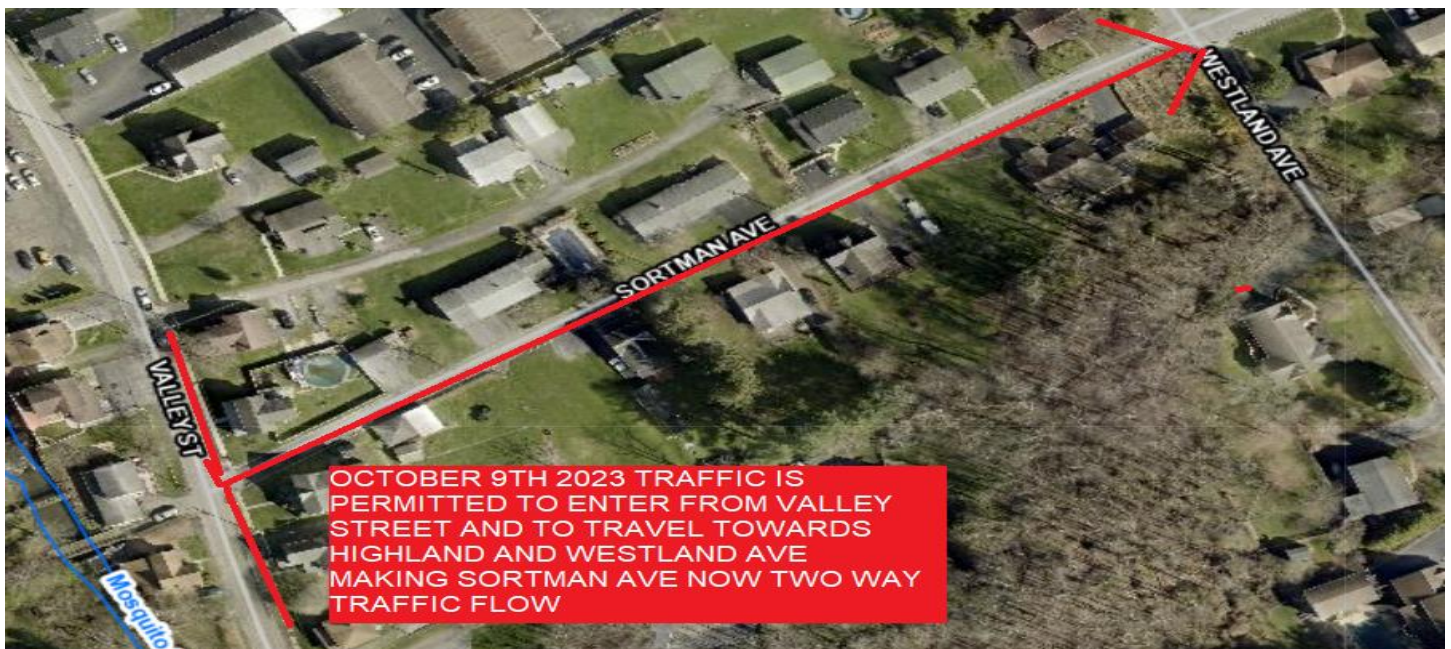
**IF YOU HAVE ANY QUESTIONS, PLEASE CONTACT THE BOROUGH OFFICE AT
ABAKER@DUBOISTOWNBOROUGH.ORG OR CALL 570-323-3646**

SEE DIAGRAMS ON NEXT PAGE

CURRENTLY TODAY 9/8/23 - TRAFFIC IS ONE WAY FROM WESTLAND AND HIGHLAND AVE ON TO SORTMAN AVE TO VALLEY STREET – YOU ARE NOT PERMITTED TO ENTER SORTMAN AVE FROM VALLEY STREET.



AFTER OCTOBER 9, 2023, TRAFFIC WILL BE TWO WAYS ON SORTMAN AVE ALLOWING TRAFFIC TO ENTER SORTMAN AVE FROM VALLEY STREET AS BELOW DIAGRAM SHOWS:



2651 Euclid Avenue, DuBoistown, PA 17702

Office: 570-323-3646 | abaker@duboisstownborough.org